

LOC/DME I-IPJ 111.15 Chan 48 (Y)	APP CRS 233°	Rwy Idg TDZE Apt Elev	5501 872 878
---	------------------------	-----------------------------	---

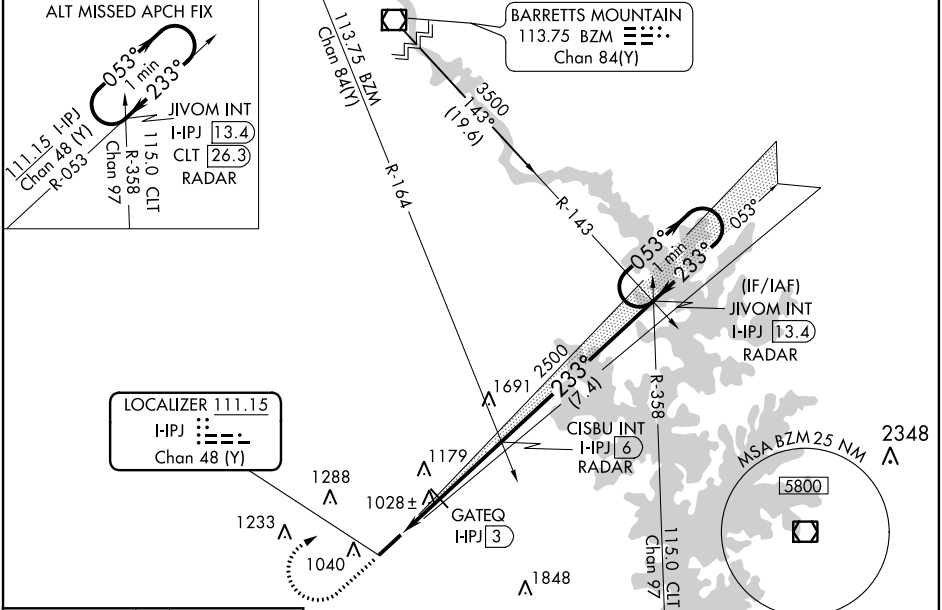
ILS Z or LOC Z RWY 23

LINCOLNTON-LINCOLN COUNTY RGNL (IPJ)

⚠ When local altimeter setting not received, use Charlotte altimeter setting: increase DA to 1212 feet and visibility 1/8 SM; increase all MDAs 80 feet and visibility S-LOC 23 Cats C/D 1/8 SM and Circling Cats C/D 1/4 SM and GATEQ Fix Minimums Cats C/D 1/4 SM. VDP NA when using Charlotte altimeter setting. Rwy 23 helicopter visibility reduction below 3/4 SM NA.

MISSED APPROACH: Climb to 1600 then climbing right turn to 3100 on heading 043° and BZM VOR/DME R-143 to JIVOM INT/I-PJ 13.4 DME/RADAR and hold.

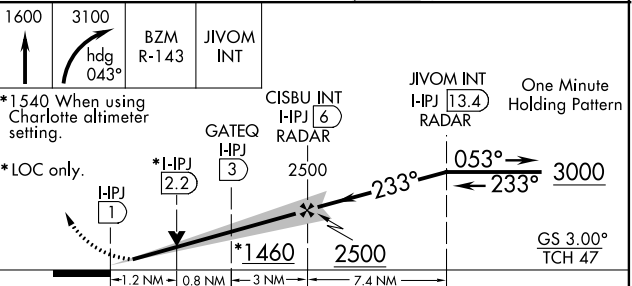
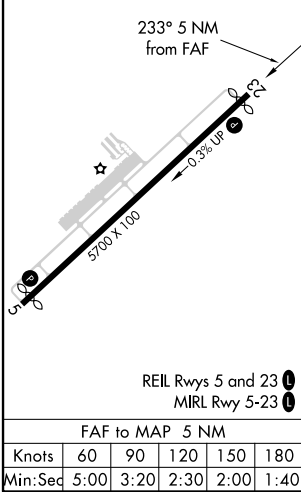
AWOS-3 119.675	CHARLOTTE APP CON 134.75 257.2	CLNC DEL (GCO) 124.9	UNICOM 123.05 (CTAF) 0
--------------------------	--	--------------------------------	----------------------------------



SE-2, 19 MAY 2022 to 16 JUN 2022

SE-2, 19 MAY 2022 to 16 JUN 2022

ELEV 878	TDZE 872
-----------------	-----------------



CATEGORY	A	B	C	D
S-ILS 23	1149-7/8 277 (300-%)			
S-LOC 23	1460-1 588 (600-1)	1460-1 3/4 588 (600-1 3/4)	1460-2 1/4 762 (800-2 1/4)	1460-2 1/2 762 (800-2 1/2)

CIRCLING	1460-1 582 (600-1)	1460-2 1/4 762 (800-2 1/4)	1460-2 1/2 762 (800-2 1/2)
-----------------	--------------------	----------------------------	----------------------------

GATEQ FIX MINIMUMS				
S-LOC 23	1280-1 408 (500-1)	1280-1 1/8 408 (500-1 1/8)	1280-2 1/4 408 (500-2 1/4)	1280-2 1/2 408 (500-2 1/2)
CIRCLING	1400-1 522 (600-1)	1440-1 562 (600-1)	1640-2 1/4 762 (800-2 1/4)	1640-2 1/2 762 (800-2 1/2)