

KNIGHTS TWO DEPARTURE

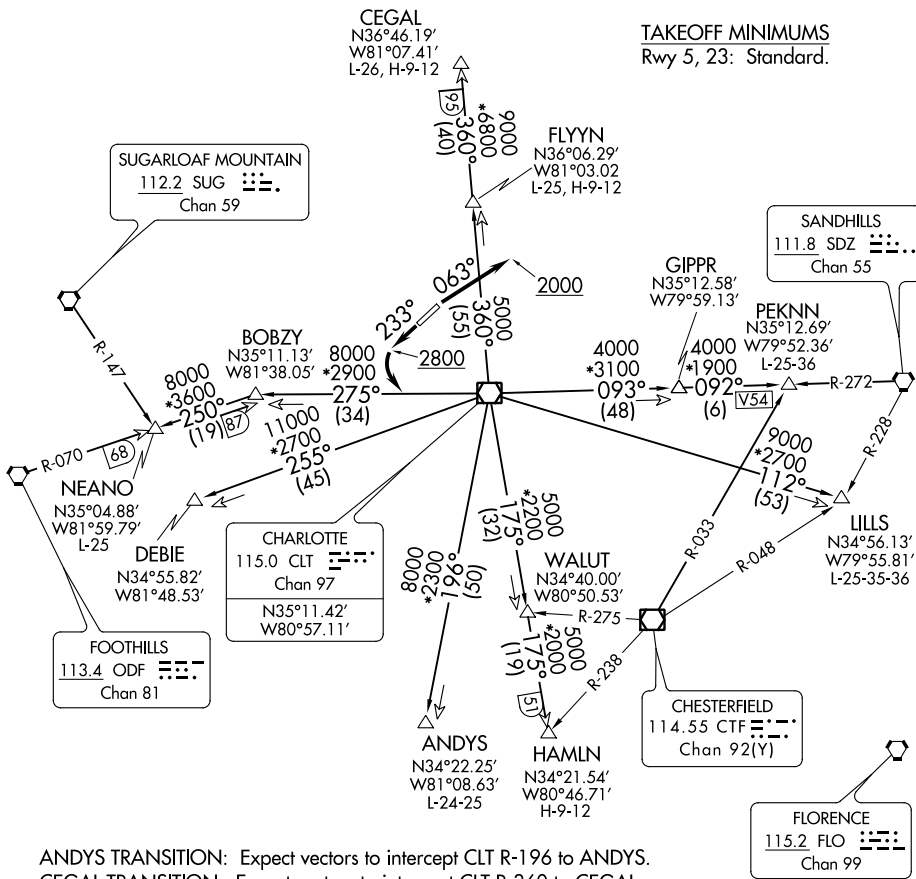
LINCOLN, NORTH CAROLINA

AWOS-3
 119.675
 CLNC DEL (GCO)
 124.9
 UNICOM (CTAF)
 123.05
 CHARLOTTE DEP CON
 134.75 257.2

NOTE: For propeller aircraft only.
 NOTE: RADAR and DME required.
 NOTE: Turboprops: Operate in a manner that will result in best forward speed and climb rate.
 NOTE: Transponder code will be issued via Charlotte clearance delivery.

**TOP ALTITUDE:
 3000**

TAKEOFF MINIMUMS
 Rwy 5, 23: Standard.



ANDYS TRANSITION: Expect vectors to intercept CLT R-196 to ANDYS.
 CEGAL TRANSITION: Expect vectors to intercept CLT R-360 to CEGAL.
 DEBIE TRANSITION: Expect vectors to intercept CLT R-255 to DEBIE.
 FLYYN TRANSITION: Expect vectors to intercept CLT R-360 to FLYYN.
 HAMLN TRANSITION: Expect vectors to intercept CLT R-175 to HAMLN.
 LILLS TRANSITION: Expect vectors to intercept CLT R-112 to LILLS.
 NEANO TRANSITION: Expect vectors to intercept CLT R-275 to BOBZY then ODF R-070 to NEANO.
 PEKNN TRANSITION: Expect vectors to intercept CLT R-093 to GIPPR then SDZ R-272 to PEKNN.

(NARRATIVE ON FOLLOWING PAGE)

NOTE: Chart not to scale.

KNIGHTS TWO DEPARTURE

SE-2, 19 MAY 2022 to 16 JUN 2022

SE-2, 19 MAY 2022 to 16 JUN 2022