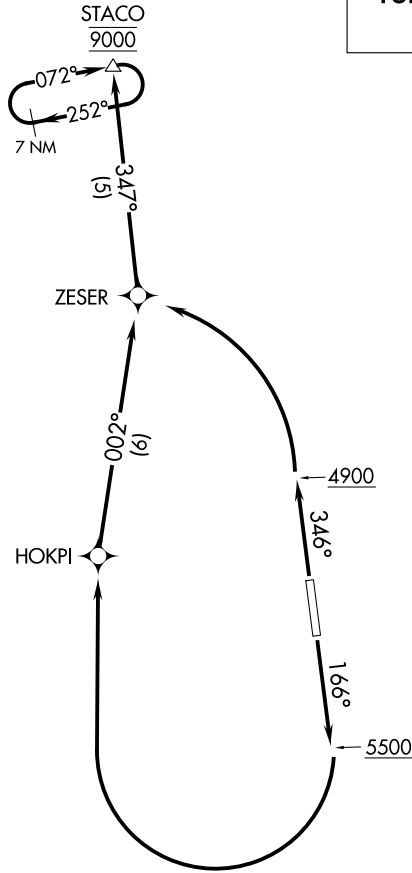


SLC ASOS  
125.625  
AWOS-3  
119.725  
SALT LAKE CITY DEP CON  
135.5 316.15  
CTAF  
123.0

**TOP ALTITUDE:  
9000**



NOTE: RNAV 1.  
NOTE: GPS required.

TAKEOFF MINIMUMS

Rwy 17: Standard with minimum climb of 350' per NM to 8200.  
Rwy 35: Standard with minimum climb of 380' per NM to 9000.

NOTE: Chart not to scale.

**DEPARTURE ROUTE DESCRIPTION**

TAKEOFF RUNWAY 17: Climb heading 166° to 5500, then climbing right turn direct HOKPI, then on depicted route to STACO, thence. . . .

TAKEOFF RUNWAY 35: Climb heading 346° to 4900, then climbing left turn direct ZESER, then on depicted route to STACO, thence. . . .

. . . . Maintain 9000 and hold at STACO.

SW-4, 19 MAY 2022 to 16 JUN 2022

SW-4, 19 MAY 2022 to 16 JUN 2022