

WAAS CH 53518 W17A	APP CRS 174°	Rwy Idg TDZE Apt Elev	3898 822 824
--	------------------------	-----------------------------	---

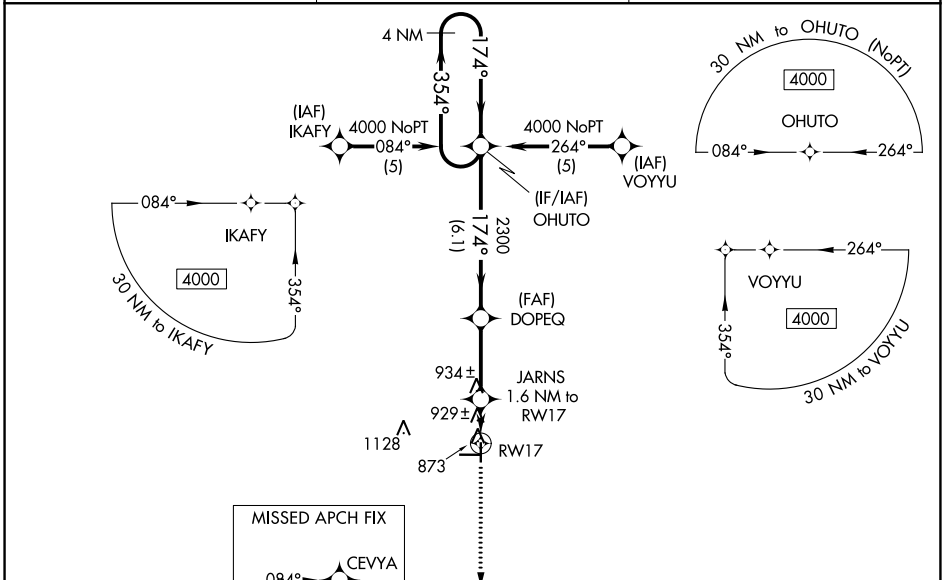
RNAV (GPS) RWY 17

HUTSON FLD (GAF)

⚠ NA For uncompensated Baro-VNAV systems, LNAV/VNAV NA below -1.6°C (4°F) or above 54°C (130°F). DME/DME RNP-0.3 NA. Visibility reduction by helicopters NA. When local altimeter setting not received, use Grand Forks Intl altimeter setting and increase all DA 69 feet and all MDA 80 feet. Increase LPV and LNAV/VNAV all Cats and LNAV Cat C visibility ¼ mile. Baro-VNAV NA when using Grand Forks Intl altimeter setting.

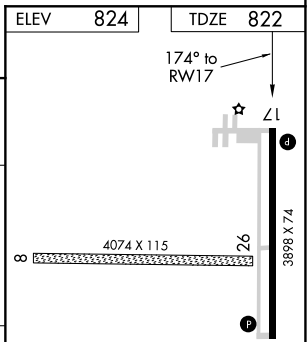
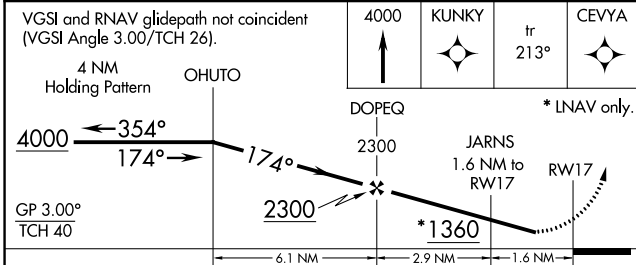
MISSED APPROACH: Climb to 4000 direct KUNKY and on track 213° to CEVYA and hold, continue climb-in-hold to 4000.

AWOS-3 118.625	GRAND FORKS APP CON * 118.1 318.1	UNICOM 122.8 (CTAF)
--------------------------	---	-------------------------------

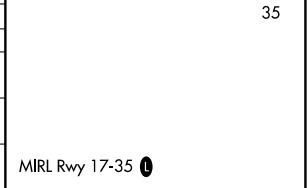


⚠ 1530

VGSI and RNAV glidepath not coincident (VGSI Angle 3.00/TCH 26).



CATEGORY	A	B	C	D
LPV DA	1072-1	250 (300-1)		NA
LNAV/VNAV DA	1228-1½	406 (500-1½)		NA
LNAV MDA	1200-1	378 (400-1)		NA
CIRCLING	1340-1	516 (600-1)	1340-1½ 516 (600-1½)	NA



NC-1, 19 MAY 2022 to 16 JUN 2022

NC-1, 19 MAY 2022 to 16 JUN 2022