

APP CRS <b>076°</b>	Rwy Idg <b>5101</b>
	TDZE <b>3305</b>
	Apt Elev <b>3313</b>

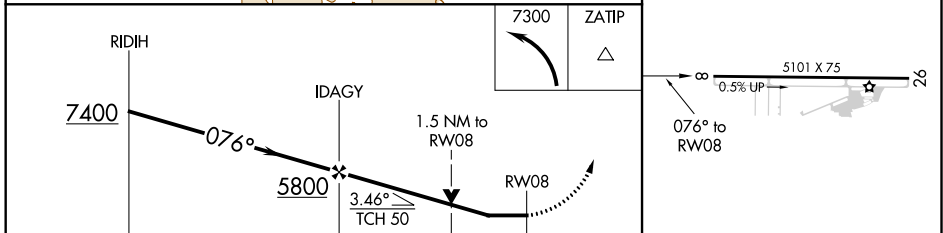
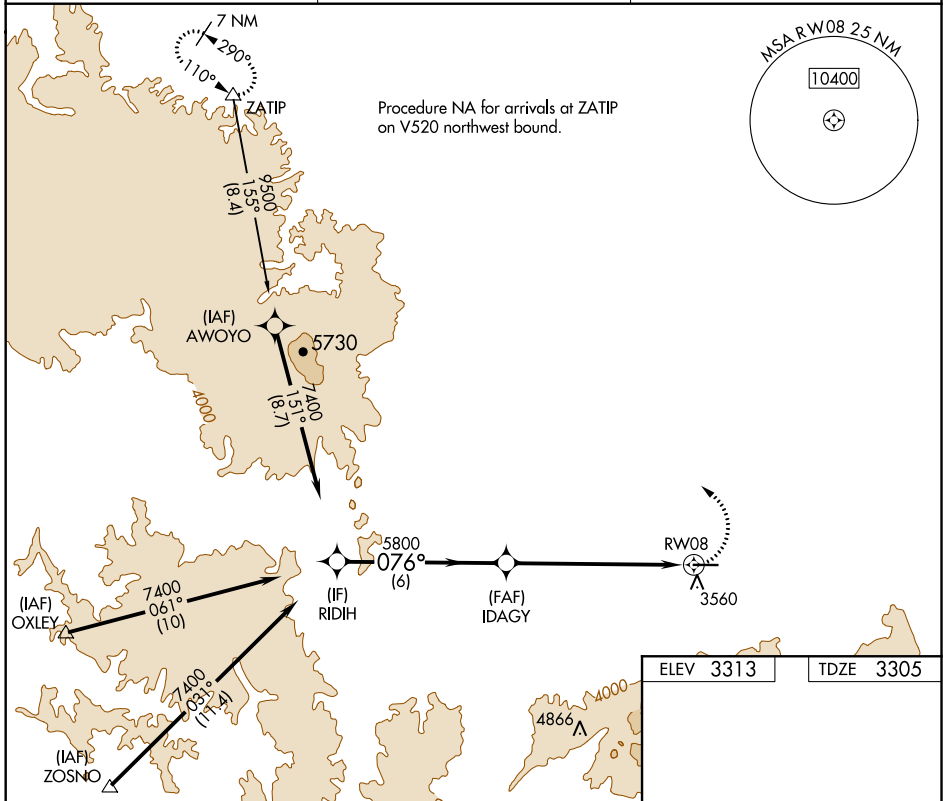
# RNAV (GPS) RWY 8

IDAHO COUNTY (GIC)

**⚠** Circling NA south of Rwy 8-26. Rwy 8 Helicopter visibility reduction below  $\frac{3}{4}$  SM NA. DME/DME RNP-0.3 NA.

**⚠** MISSED APPROACH: Climbing left turn to 7300 direct ZATIP and hold.

AWOS-3 <b>118.175</b>	SEATTLE CENTER <b>123.95 290.55</b>	CTAF <b>122.8 0</b>
--------------------------	--	------------------------



CATEGORY	A	B	C	D
LNVA MDA	3900-1	595 (600-1)	3900-1 $\frac{3}{4}$	595 (600-1 $\frac{3}{4}$ )
<b>C</b> CIRCLING	3900-1	587 (600-1)	3900-1 $\frac{3}{4}$ 587 (600-1 $\frac{3}{4}$ )	3900-2 587 (600-2)

MIRL Rwy 8-26  
REIL Rwy 8 **0**

NW-1, 19 MAY 2022 to 16 JUN 2022

NW-1, 19 MAY 2022 to 16 JUN 2022