

WAAS CH 87114 W28A	APP CRS 276°	Rwy Idg TDZE Apt Elev	5151 110 112
--	------------------------	-----------------------------	---

RNAV (GPS) RWY 28

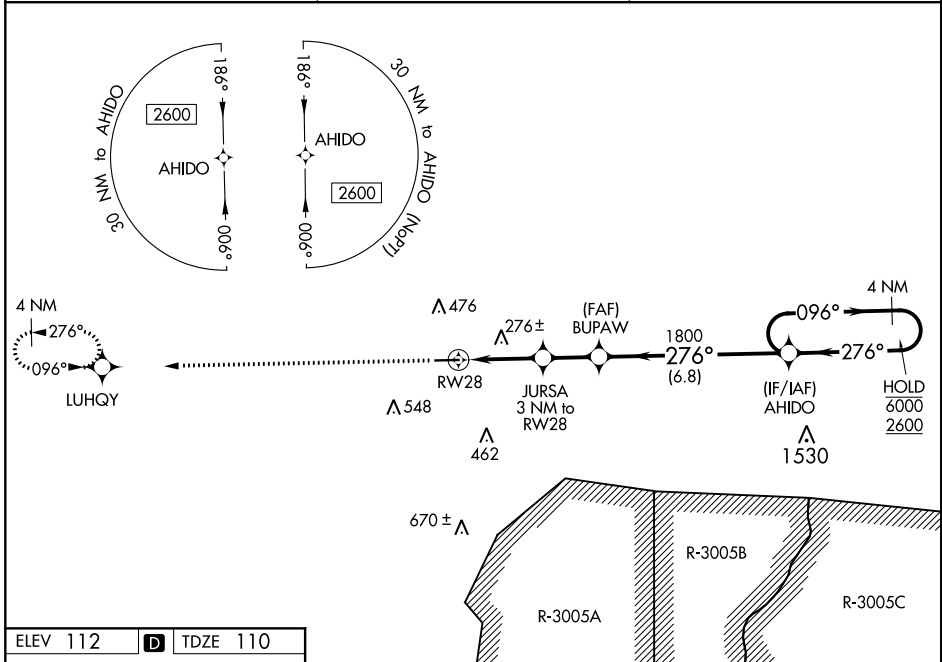
CLAXTON-EVANS COUNTY (C'WV)

RNP APCH.

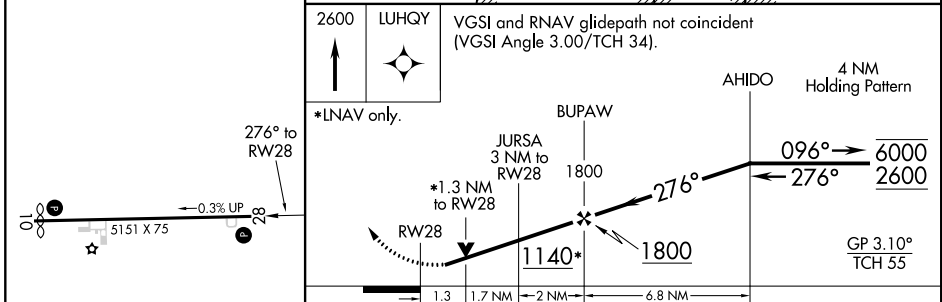
▼ Rwy 28 helicopter visibility reduction below 3/4 SM NA.
▲ For uncompensated Baro-VNAV systems, LNAV/VNAV NA below -15°C or above 54°C.

MISSED APPROACH: Climb to 2600 direct LUHQY and hold.

AWOS-3 120.075	JACKSONVILLE CENTER 132.925 363.2	UNICOM 122.8 (CTAF) 0
--------------------------	---	---------------------------------



ELEV 112	D	TDZE 110
----------	----------	----------



CATEGORY	A	B	C	D
LPV DA		386-1	276 (300-1)	
LNAV/VNAV DA		403-1	293 (300-1)	
LNAV MDA	540-1	430 (500-1)	540-1 1/4	430 (500-1 1/4)
C CIRCLING	580-1 468 (500-1)	780-1 668 (700-1)	860-2 1/4 748 (800-1 1/4)	860-2 1/2 748 (800-2 1/2)

SE-4, 19 MAY 2022 to 16 JUN 2022

SE-4, 19 MAY 2022 to 16 JUN 2022