

APP CRS	Rwy Idg	3200
099°	TDZE	400
	Apt Elev	400

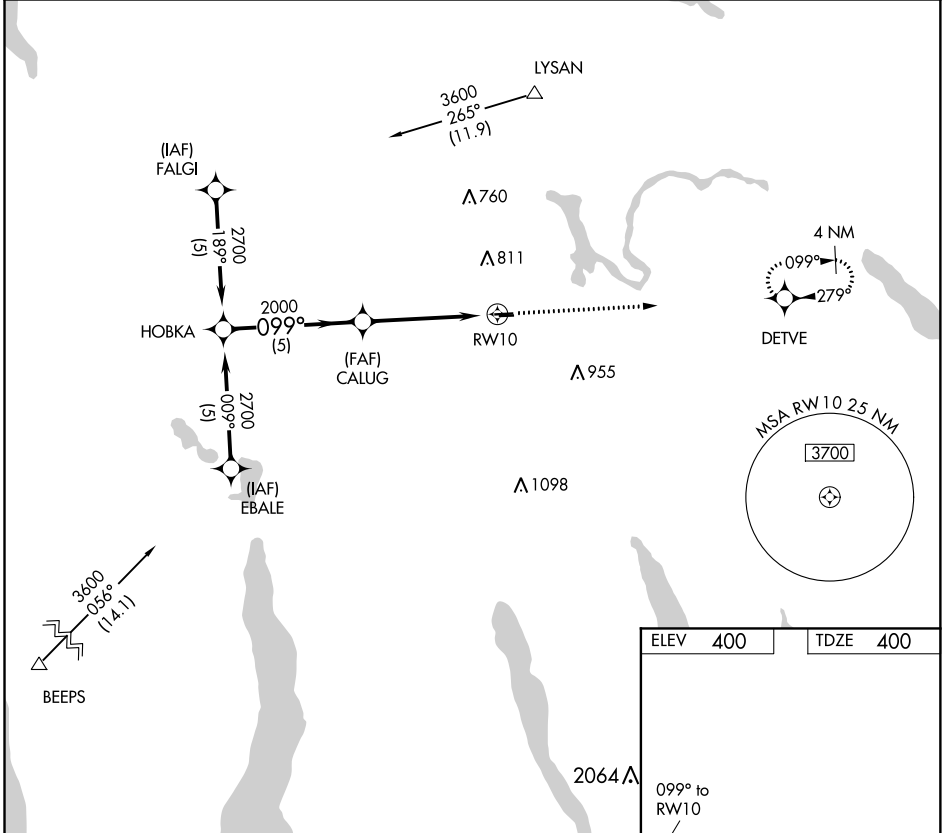
RNAV (GPS) RWY 10

WHITFORDS (B16)

RNP APCH.	Use Syracuse altimeter setting. Procedure NA at night. Rwy 10 helicopter visibility reduction below 1 SM NA.
▼ Use ▲ NA	

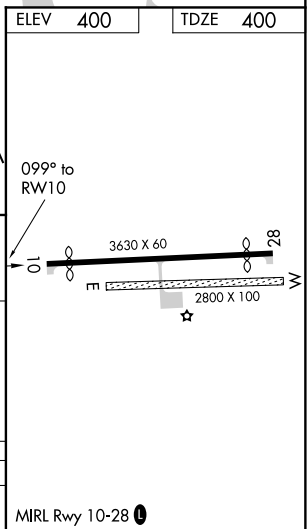
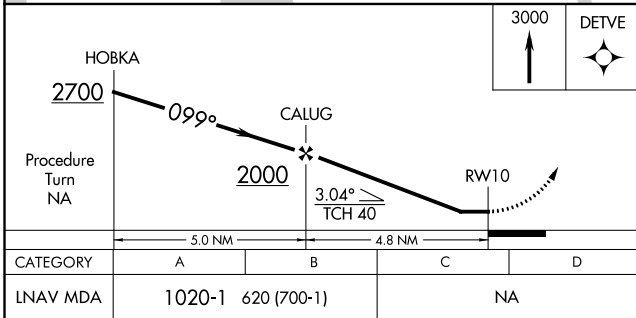
MISSED APPROACH: Climb to 3000 direct DETVE WP and hold.

SYRACUSE APP CON 126.125 269.125	UNICOM 122.8 (CTAF)	122.7 0
--	-------------------------------	-----------------------



NE-2, 19 MAY 2022 to 16 JUN 2022

NE-2, 19 MAY 2022 to 16 JUN 2022



CATEGORY	A	B	C	D
LNAV MDA	1020-1	620 (700-1)	NA	