

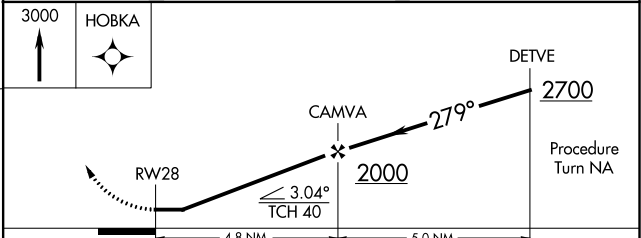
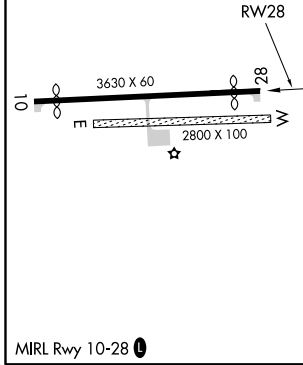
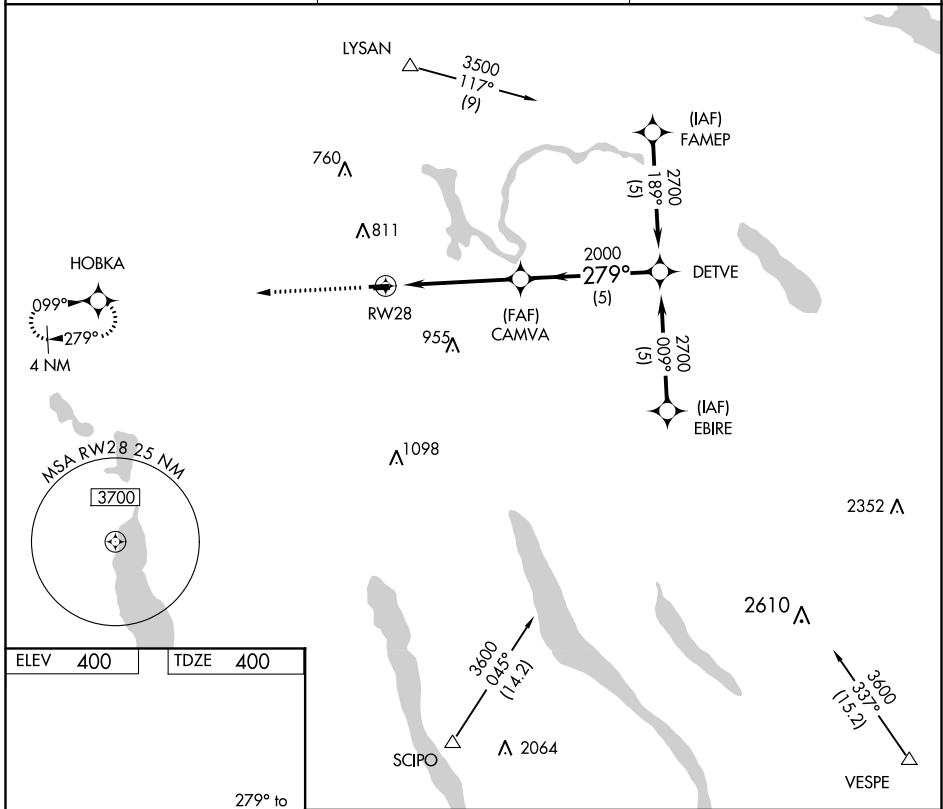
APP CRS 279°	Rwy Idg 3280
	TDZE 400
	Apt Elev 400

RNAV (GPS) RWY 28

WHITFORDS (B16)

V Use Syracuse altimeter setting. DME/DME RNP-0.3 NA. Procedure NA at night. Rwy 28 helicopter visibility reduction below 1 SM NA. **MISSED APPROACH:** Climb to 3000 direct HOBKA WP and hold.

SYRACUSE APP CON 126.125 269.125	UNICOM 122.8 (CTAF)	122.70
--	-------------------------------	---------------



CATEGORY	A	B	C	D
LNAV MDA	1000-1	600 (600-1)	NA	
CIRCLING	1000-1 600 (600-1)	1060-1 660 (700-1)	NA	

NE-2, 19 MAY 2022 to 16 JUN 2022

NE-2, 19 MAY 2022 to 16 JUN 2022