

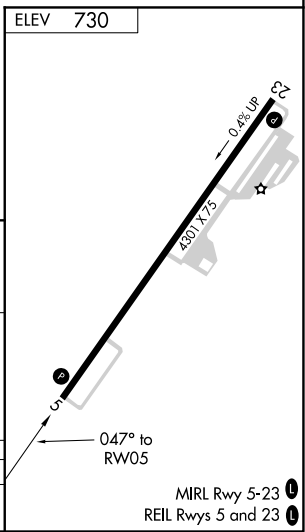
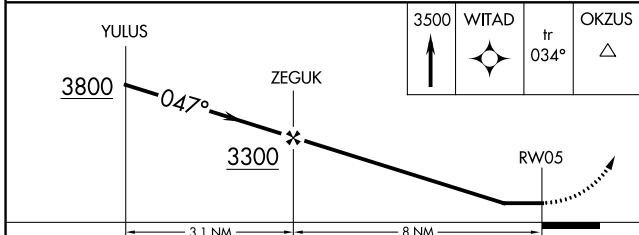
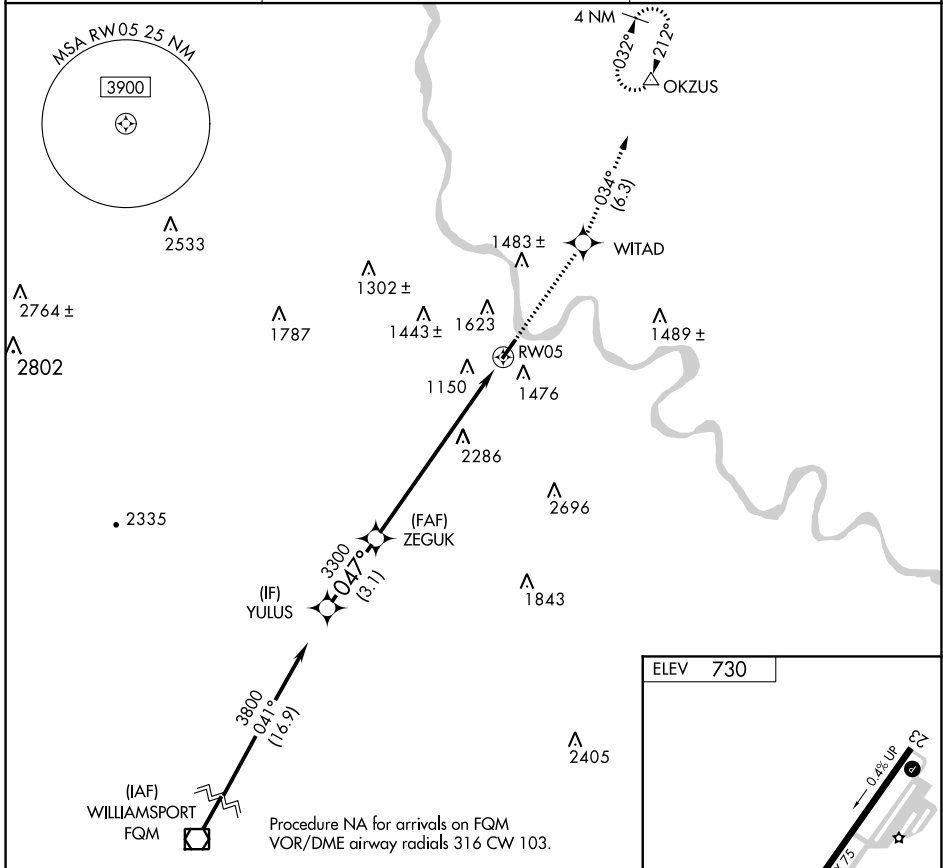
APP CRS	Rwy Idg	N/A
047°	TDZE	N/A
	Apt Elev	730

RNAV (GPS)-A

BRADFORD COUNTY (N27)

<p>NA</p> <p>DME/DME RNP-0.3 NA. Visibility reduction by helicopters NA. When local altimeter setting not received, use Elmira altimeter setting and increase all MDAs 40 feet. Procedure NA at night.</p>	<p>MISSED APPROACH: Climb to 3500 direct WITAD and on track 034° to OKZUS and hold.</p>
---	---

AWOS-3 119.925	BINGHAMTON APP CON 118.6 257.625	UNICOM 123.0 (CTAF) 0
--------------------------	--	---------------------------------



CATEGORY	A	B	C	D
CIRCLING	2760-1¼ 2030 (2100-1¼)	2760-1½ 2030 (2100-1½)		NA

NE-4, 19 MAY 2022 to 16 JUN 2022

NE-4, 19 MAY 2022 to 16 JUN 2022