

WAAS CH <b>70431</b> <b>W24A</b>	APP CRS <b>245°</b>	Rwy Idg TDZE <b>1666</b> Apt Elev <b>1666</b>
--	------------------------	---

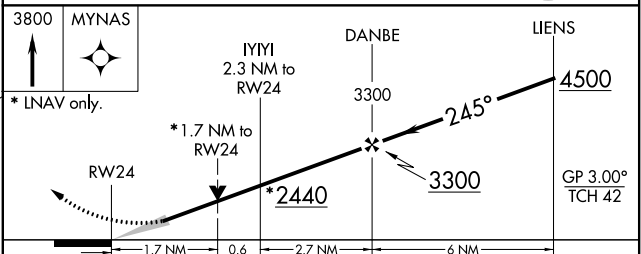
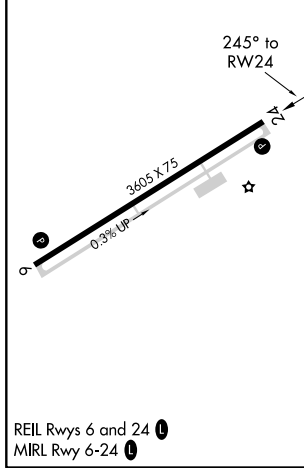
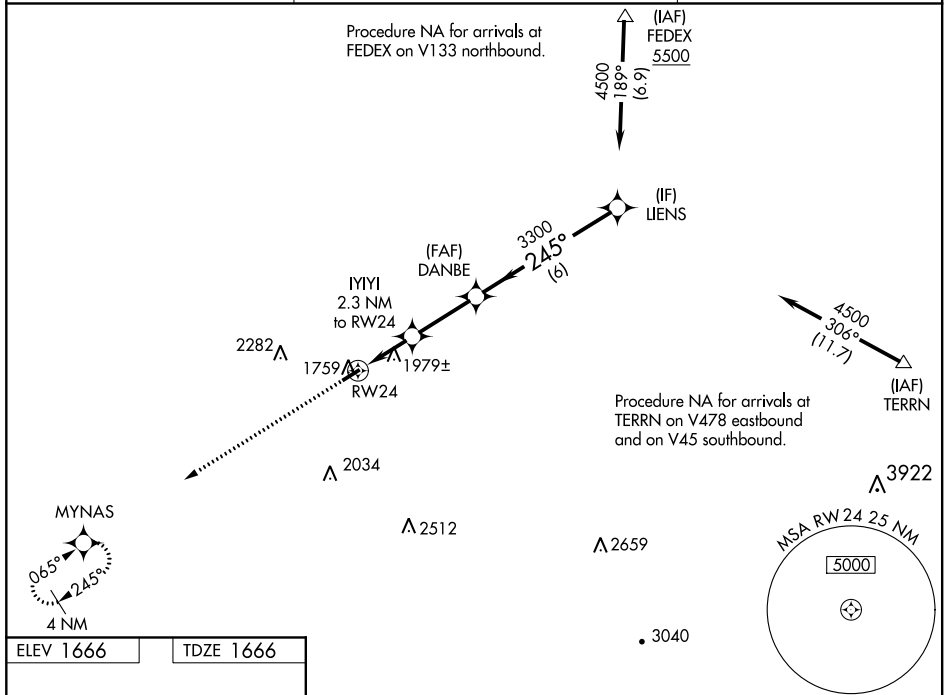
# RNAV (GPS) RWY 24

LOGAN COUNTY (6L4)

**⚠** For uncompensated Baro-VNAV systems, LNAV/VNAV NA below -18°C (0°F) or above 54°C (130°F). Baro-VNAV and VDP NA when using Pineville altimeter setting. DME/DME RNP-0.3 NA.  
**⚠** When local altimeter setting not received, use Pineville altimeter setting: increase LPV DA to 1985 feet and all visibilities 1/8 SM; increase LNAV/VNAV DA to 1988 feet and all visibilities 1/4 SM; increase all MDA 80 feet and LNAV Cat C visibility and Circling Cat B visibility 1/4 SM.

**MISSED APPROACH:**  
Climb to 3800 direct MYNAS and hold.

AWOS-3PT <b>119.375</b>	CHARLESTON APP CON <b>119.2 269.125</b>	CTAF <b>122.9</b>
----------------------------	--	-------------------



CATEGORY	A	B	C	D
LPV DA	1916-7/8	250 (300-7/8)		NA
LNAV/VNAV DA	1919-7/8	253 (300-7/8)		NA
LNAV MDA	2240-1	574 (600-1)	2240-1 5/8 574 (600-1 5/8)	NA
<input checked="" type="checkbox"/> CIRCLING	2360-1 694 (700-1)	2400-1 734 (800-1)	2720-3 1054 (1100-3)	NA

NE-4, 19 MAY 2022 to 16 JUN 2022

NE-4, 19 MAY 2022 to 16 JUN 2022