

WAAS CH <b>40438</b> <b>W06A</b>	APP CRS <b>065°</b>	Rwy Idg TDZE Apt Elev	<b>3605</b> <b>1665</b> <b>1666</b>
--	------------------------	-----------------------------	---

# RNAV (GPS) RWY 6

LOGAN COUNTY (6L4)

RNP APCH.

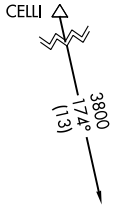
**⚠** Rwy 6 helicopter visibility reduction below 3/4 SM NA. For uncompensated Baro-VNAV systems, LNAV/VNAV NA below -18°C or above 54°C. When local altimeter setting not received, use Pineville altimeter setting: increase LPV DA to 2079 feet and LNAV/VNAV DA to 2032 feet and LPV and LNAV/VNAV all Cats visibilities 1/4 SM; increase all MDA 80 feet and LNAV Cat C visibility and Circling Cat B visibility 1/4 SM. VDP and Baro-VNAV NA when using Pineville altimeter setting.

**MISSED APPROACH:**  
Climb to 4500 direct LIENS and hold.

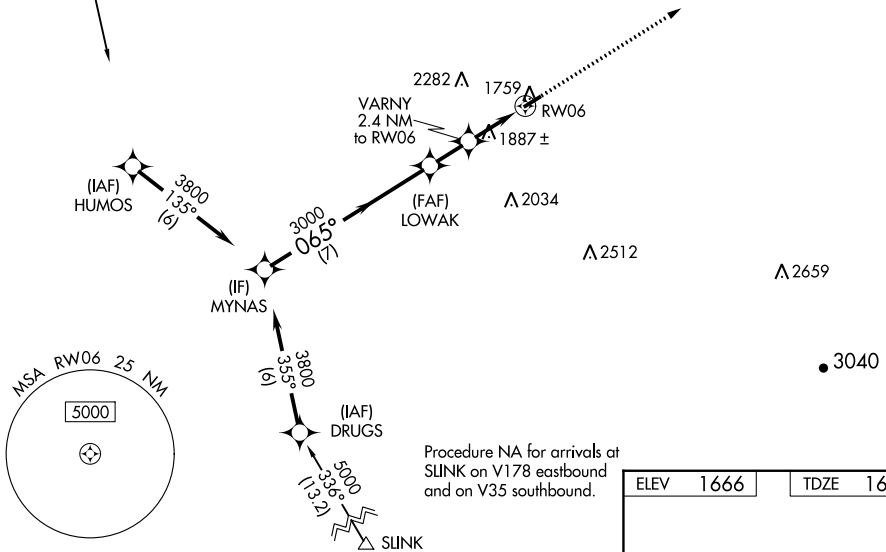
AWOS-3PT  
**119.375**

CHARLESTON APP CON  
**119.2 269.125**

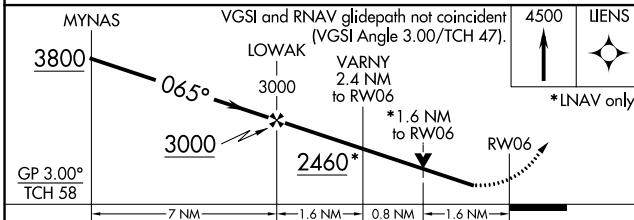
CTAF **122.9**



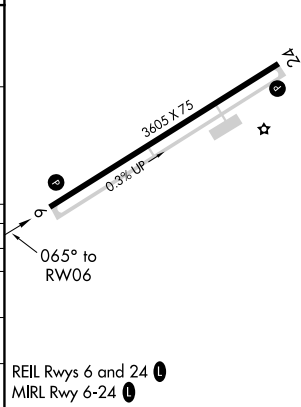
Procedure NA for arrivals at CELLI on V115 northeast bound and on V478 westbound.



ELEV	1666	TDZE	1665
------	------	------	------



CATEGORY	A	B	C	D
LPV DA	2010-1 1/8	345 (400-1 1/8)		NA
LNAV/VNAV DA	1963-1	298 (300-1)		NA
LNAV MDA	2200-1	535 (600-1)	2200-1 1/2 535 (600-1 1/2)	NA
<b>C</b> CIRCLING	2360-1 694 (700-1)	2400-1 734 (800-1)	2720-3 1054 (1100-3)	NA



NE-4, 19 MAY 2022 to 16 JUN 2022

NE-4, 19 MAY 2022 to 16 JUN 2022