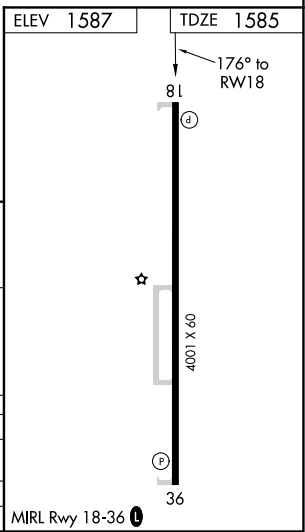
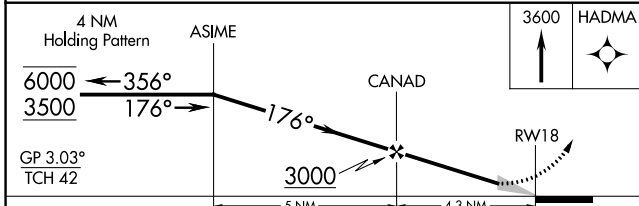
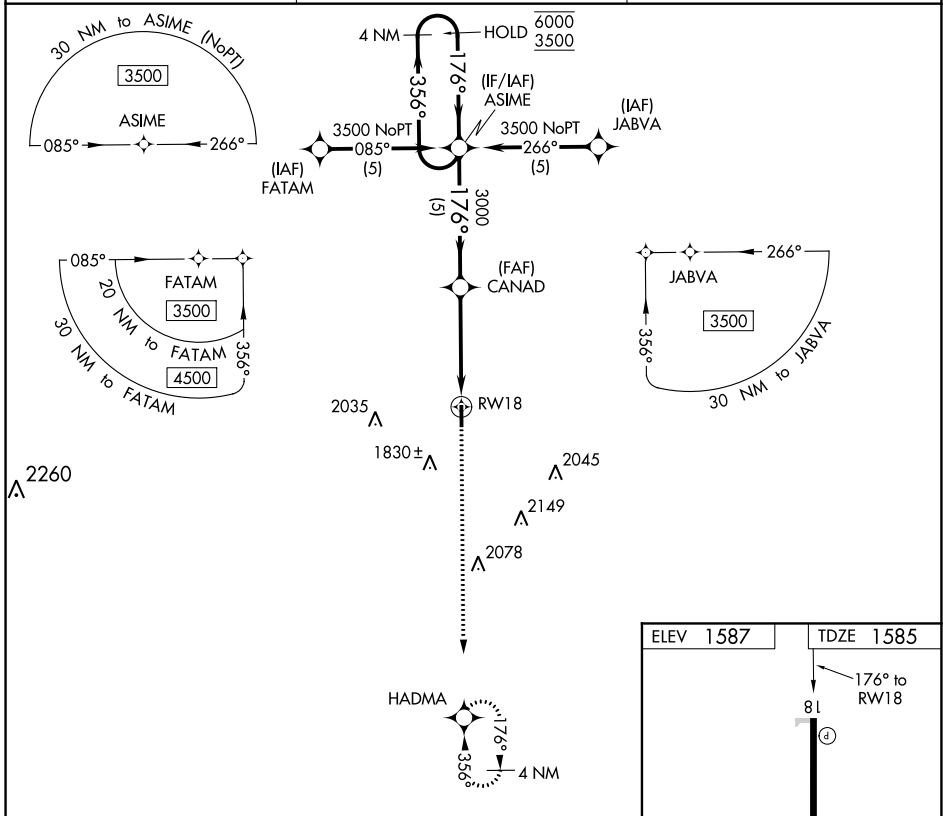


APP CRS 176°	Rwy Idg TDZE Apt Elev	4001 1585 1587
------------------------	-----------------------------	---

RNAV (GPS) RWY 18

HINTON MUNI (208)

RNP APCH-GPS.		MISSED APPROACH: Climb to 3600 direct HADMA and hold.
Baro-VNAV NA. Use Weatherford altimeter setting.		
OJA AWOS-3PT 118.575	FORT WORTH CENTER 128.4 269.37	UNICOM 123.05 (CTAF) 0



CATEGORY	A	B	C	D
LNAV/VNAV DA	2001-1 1/8	416 (500-1 1/8)		NA
LNAV MDA	2060-1	475 (500-1)		NA
CIRCLING	2200-1	613 (700-1)		NA

SC-1, 19 MAY 2022 to 16 JUN 2022

SC-1, 19 MAY 2022 to 16 JUN 2022