

APP CRS 004°	Rwy Idg TDZE Apt Elev	N/A N/A 3636
------------------------	-----------------------------	---

RNAV (GPS)-A

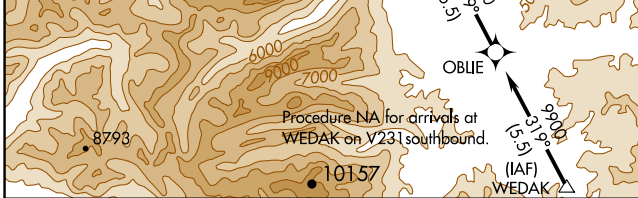
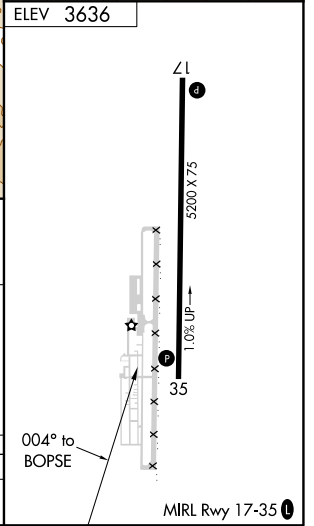
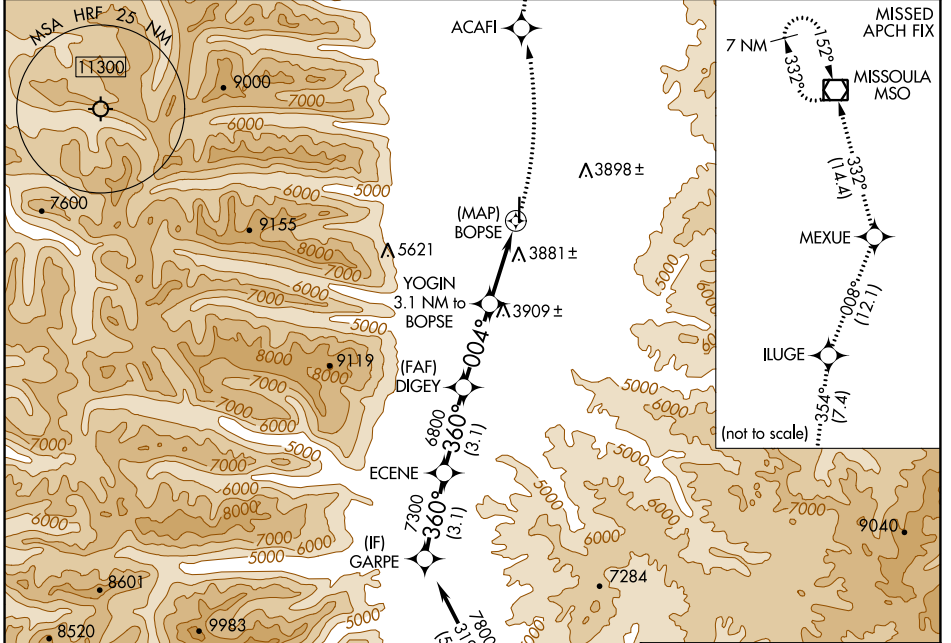
RAVALLI COUNTY (HRF)

RNP APCH-GPS.

⚠ Circling NA to Rwys 16 and 34. Circling to Rwy 35 NA at night. Rwy 35 helicopter visibility reduction below 1 SM NA.

MISSED APPROACH: Climbing left turn to 11200 direct ACAFI and on track 354° to ILUGE and track 008° to MEXUE and track 332° to MISSOULA VOR/DME and hold.

AWOS-3P 119.825	SALT LAKE CENTER 132.4 338.3	UNICOM 122.8 (CTAF)
---------------------------	--	-------------------------------



	11200	ACAFI	ILUGE	MEXUE	MSO
		tr 354°	tr 008°	tr 332°	
CATEGORY	A	B	C	D	
CIRCLING	4240-1 604 (700-1)	4260-1 624 (700-1)	NA		

NW-1, 19 MAY 2022 to 16 JUN 2022

NW-1, 19 MAY 2022 to 16 JUN 2022