

WAAS CH 81936 W01A	APP CRS 007°	Rwy Idg 4199 TDZE 492 Apt Elev 492
--	------------------------	---

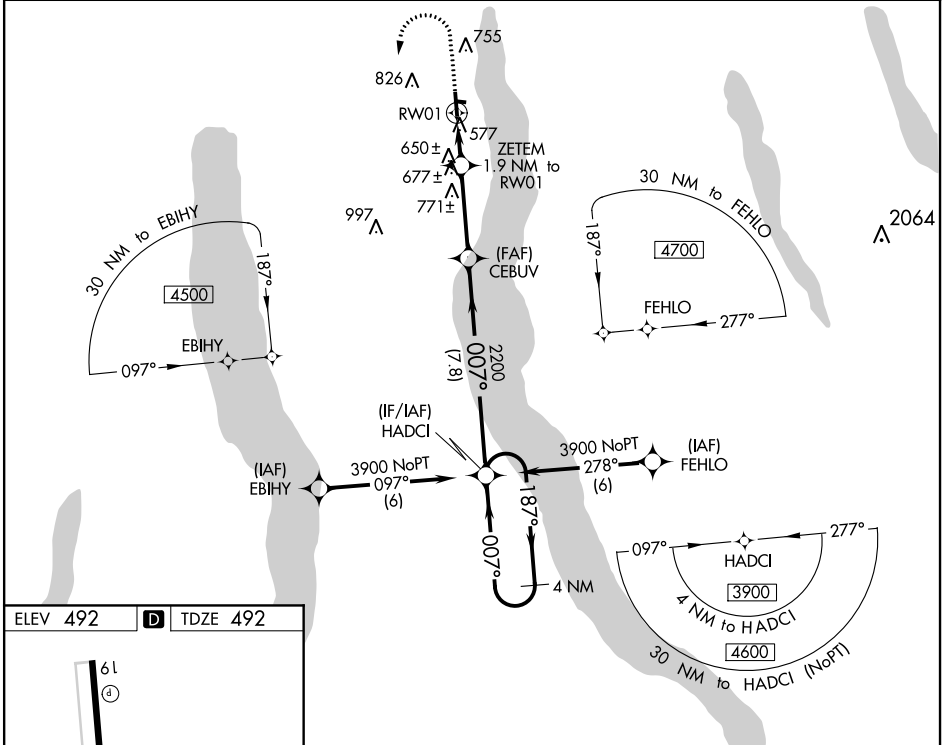
RNAV (GPS) RWY 1

FINGER LAKES RGNL (ØG7)

▽ For uncompensated Baro-VNAV systems, LNAV/VNAV NA below -15°C (5°F) or above 54°C (130°F). Baro-VNAV and VDP NA when using Syracuse altimeter setting. Rwy 1 helicopter visibility reduction below 3/4 SM NA. DME/DME RNP-0.3 NA. When local altimeter setting not received, use Syracuse altimeter setting and increase all DA 86 feet and all visibility 1/4 SM, increase all MDA 100 feet.

△ NA MISSED APPROACH: Climb to 1000 then climbing left turn to 3900 direct HADCI and hold, continue climb-in-hold to 3900.

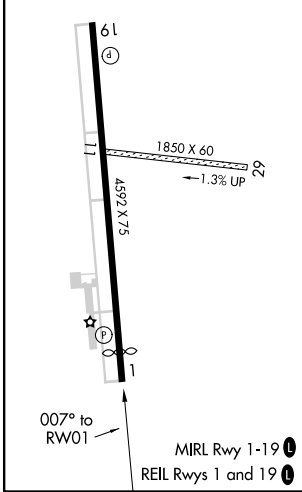
AWOS-3 120.0	SYRACUSE APP CON 126.125 269.125	ROCHESTER APP CON 119.55 269.6 (W-NW)	ELMIRA APP CON ★ 124.3 257.8 (SW-SE)	UNICOM 122.8 (CTAF) Ø
------------------------	--	---	--	--



NE-2, 19 MAY 2022 to 16 JUN 2022

NE-2, 19 MAY 2022 to 16 JUN 2022

ELEV 492	D	TDZE 492
-----------------	----------	-----------------



1000	3900	HADCI	4 NM Holding Pattern
* LNAV only		ZETEM	CEBUV
* 1.2 NM to 1.9 NM to RW01		2200	007°
RW01 RW01		1120	3900
1.2 NM		0.7 NM	3.3 NM
7.8 NM		HADCI	
CATEGORY	A	B	C
LPV DA	742-7/8	250 (300-7/8)	NA
LNAV/VNAV DA	959-1 1/8	467 (500-1 1/8)	NA
LNAV MDA	900-1	408 (500-1)	NA
CIRCLING	980-1	1180-1	NA
	488 (500-1)	688 (700-1)	