

WAAS CH 65737 W02A	APP CRS 019°	Rwy Idg TDZE Apt Elev	3665 201 202
--	------------------------	-----------------------------	---

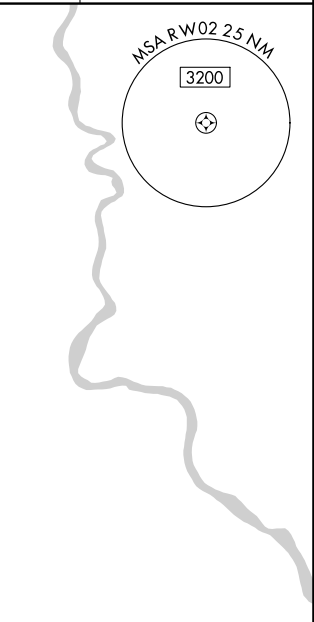
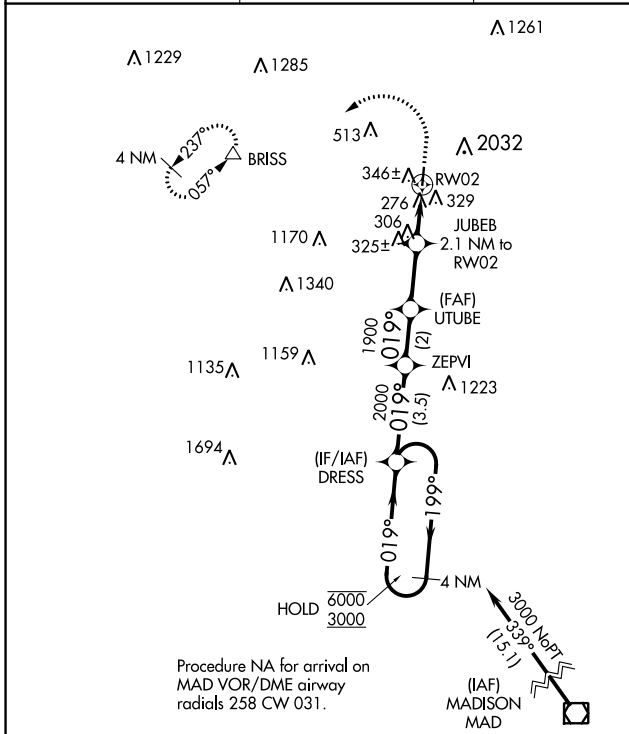
RNAV (GPS) RWY 2

ROBERTSON FLD (4B8)

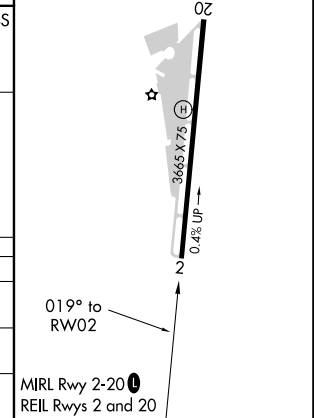
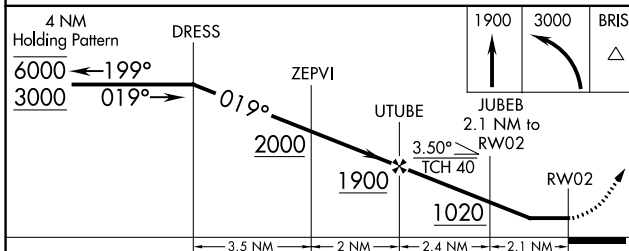
RNP APCH.
 ⚠️ NA Circling NA east of Rwy 2-20. Circling Rwy 20 NA at night. Rwy 2 helicopter visibility reduction below 1 SM NA. Use Meriden altimeter setting, when not received, use Hartford altimeter setting and increase all MDA 20 feet, increase LP Cat C visibility 1/8 SM.

MISSED APPROACH: Climb to 1900 then climbing left turn to 3000 direct BRISS and hold.

MMK ASOS 134.925	YANKEE APP CON 123.95 290.55	CLNC DEL 134.5	UNICOM 122.8 (CTAF)
----------------------------	--	--------------------------	-------------------------------



ELEV 202	TDZE 201
----------	----------



CATEGORY	A	B	C	D
LP MDA	580-1	379 (400-1)		NA
LNAV MDA	660-1	459 (500-1)	660-1 3/8 459 (500-1 3/8)	NA
C CIRCLING	860-1	658 (700-1)	1020-2 1/2 818 (900-2 1/2)	NA

NE-1, 19 MAY 2022 to 16 JUN 2022

NE-1, 19 MAY 2022 to 16 JUN 2022