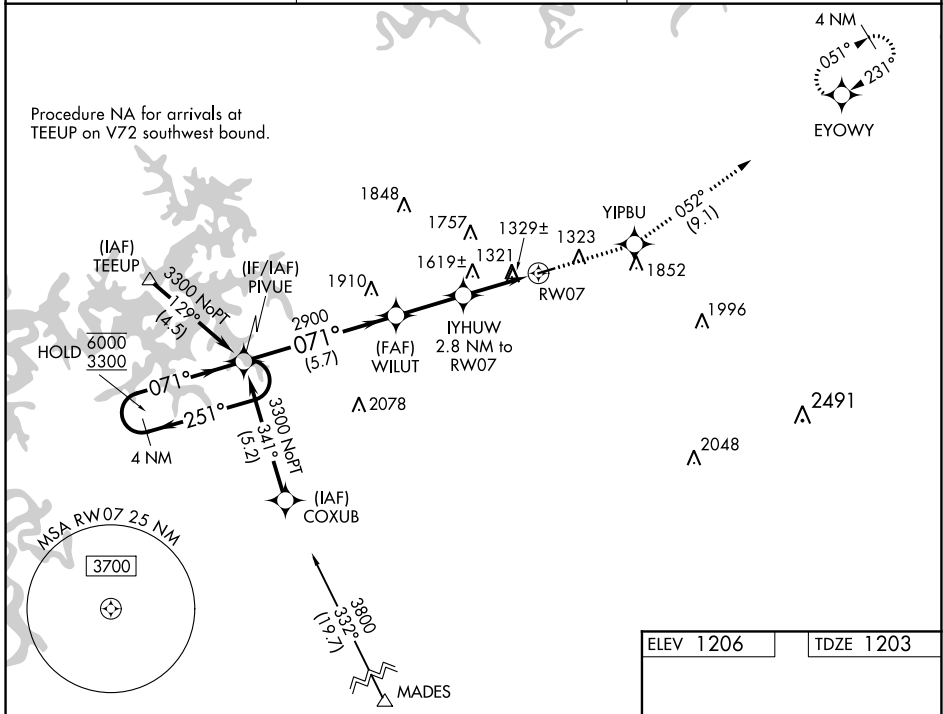


WAAS CH <b>40242</b> <b>W07A</b>	APP CRS <b>071°</b>	Rwy ldg TDZE <b>1203</b> Apt Elev <b>1206</b>
--	------------------------	---

# RNAV (GPS) RWY 7

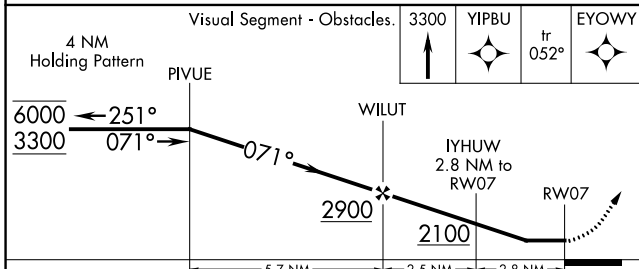
CARROLL COUNTY (4M1)

RNP APCH.		MISSED APPROACH: Climb to 3300 direct YIPBU and on track 052° to EYOWY and hold.
BBG AWOS-3 <b>124.625</b>	RAZORBACK APPROACH ★ <b>126.6 305.2</b>	CTAF <b>122.9</b>



SC-1, 19 MAY 2022 to 16 JUN 2022

SC-1, 19 MAY 2022 to 16 JUN 2022



ELEV 1206	TDZE 1203
-----------	-----------

REIL Rwy 7 and 25  
MIRL Rwy 7-25

CATEGORY	A	B	C	D
LP MDA	1660-1	457 (500-1)	NA	
LNAV MDA	1940-1	737 (800-1)	NA	
<b>C</b> CIRCLING	1940-1 734 (800-1)	1980-1 774 (800-1)	NA	