

WAAS CH 97436 W17A	APP CRS 173°	Rwy Idg TDZE Apt Elev	4497 1387 1387
--	------------------------	-----------------------------	---

RNAV (GPS) RWY 17

COMANCHE COUNTY-CITY (MKN)

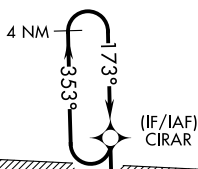
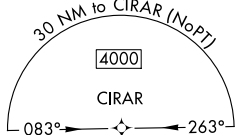
⚠ Night landing: Rwy 35 NA. DME/DME RNP-0.3 NA. When local altimeter setting is not received, use Brownwood altimeter setting; increase all DA 46 feet and all MDA 60 feet, increase LNAV/VNAV visibility all Cats 1/8 mile. Baro-VNAV and VDP NA when using Brownwood altimeter setting. For uncompensated Baro-VNAV systems, LNAV/VNAV NA below -17°C (2°F) or above 54°C (130°F).

MISSED APPROACH:
Climb to 4000 direct ZAIR and hold.

AWOS-3
118.575

FORT WORTH CENTER
127.15 314.05

UNICOM
123.075 (CTAF) 0



BROWNWOOD 1 EAST MOA



2323

BROWNWOOD 1 WEST MOA

2282

2188

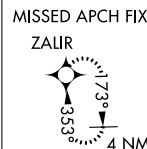
2282

2030

2113

2294

2246



ELEV 1387 TDZE 1387

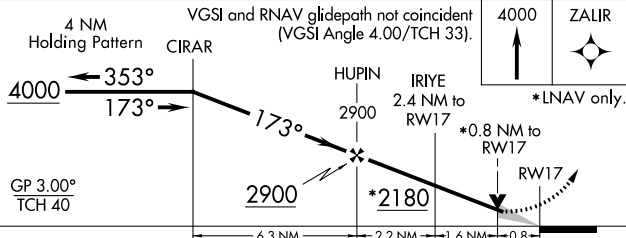
173° to RW17

Z1

4497 X 7.5

0.3% UP

35



CATEGORY	A	B	C	D
LPV DA	1637-1	250 (300-1)		NA
LNAV/VNAV DA	1686-1	299 (300-1)		NA
LNAV MDA	1760-1	373 (400-1)		NA
C CIRCLING	2100-1	713 (800-1)		NA

MIRL Rwy 17-35 0

SC-3, 19 MAY 2022 to 16 JUN 2022

SC-3, 19 MAY 2022 to 16 JUN 2022