

WAAS CH 40308 W16A	APP CRS 156°	Rwy Idg TDZE Apt Elev	3998 686 686
--	------------------------	-----------------------------	---

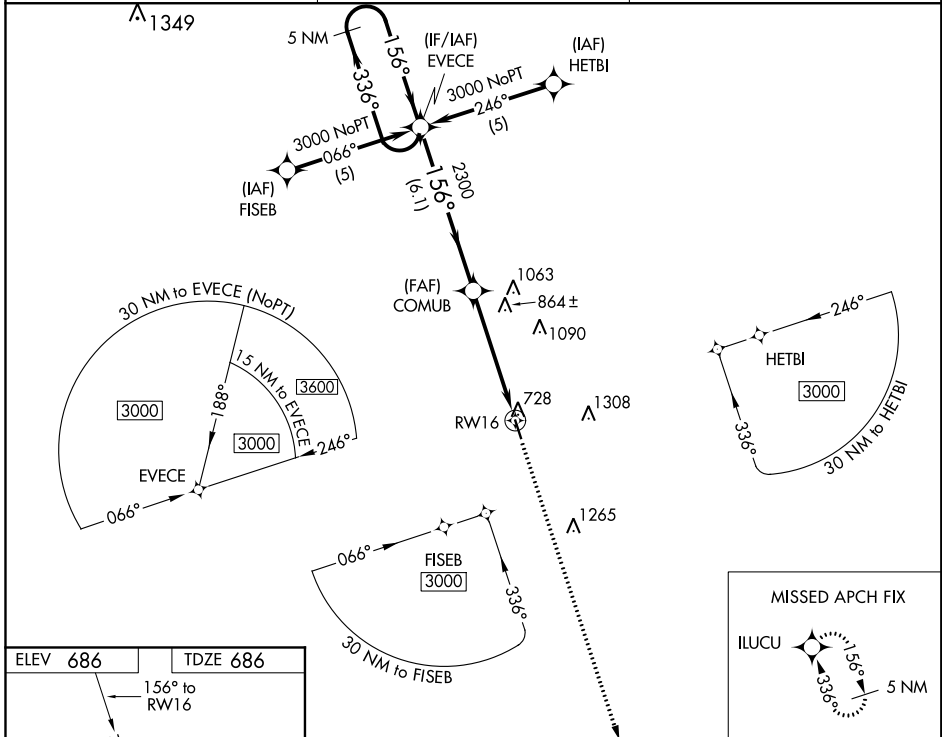
RNAV (GPS) RWY 16

HILLSBORO MUNI (INJ)

⚠ Baro-VNAV NA when using Cleburne Rgnl altimeter setting. DME/DME RNP-0.3 NA. For uncompensated Baro-VNAV systems, LNAV/VNAV NA below -16°C (4°F) or above 54°C (130°F). Visibility reduction by helicopters NA. When local altimeter setting not received use Cleburne Rgnl altimeter setting and increase all DA/MDA 80 feet, increase LPV and LNAV/VNAV visibility ¼ mile all Cats.

MISSED APPROACH: Climb to 3000 direct ILUCU and hold.

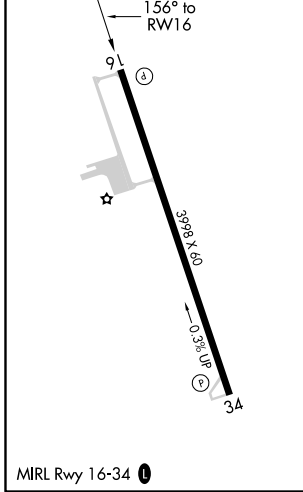
AWOS-3PT 118.725	WACO APP CON ★ 127.65 352.0	CTAF 122.90
----------------------------	---------------------------------------	-----------------------



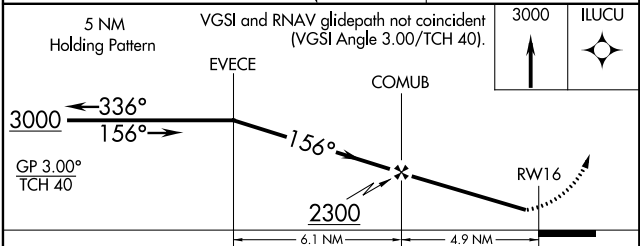
SC-2, 19 MAY 2022 to 16 JUN 2022

SC-2, 19 MAY 2022 to 16 JUN 2022

ELEV 686	TDZE 686
-----------------	-----------------



MIRL Rwy 16-34 **Ⓛ**
HILLSBORO, TEXAS
Amdt 1 25SEP08



CATEGORY	A	B	C	D
LPV DA	936-1	250 (300-1)		NA
LNAV/VNAV DA	1128-1½	442 (500-1½)		NA
LNAV MDA	1120-1	434 (500-1)		NA
CIRCLING	1180-1	1200-1		NA
	494 (500-1)	514 (600-1)		

32° 05' N-97° 06' W

RNAV (GPS) RWY 16

HILLSBORO MUNI (INJ)