

| | | |
|--|------------------------|---|
| WAAS CH 65908 W34A | APP CRS 336° | Rwy Idg 3998 TDZE 684 Apt Elev 686 |
|--|------------------------|---|

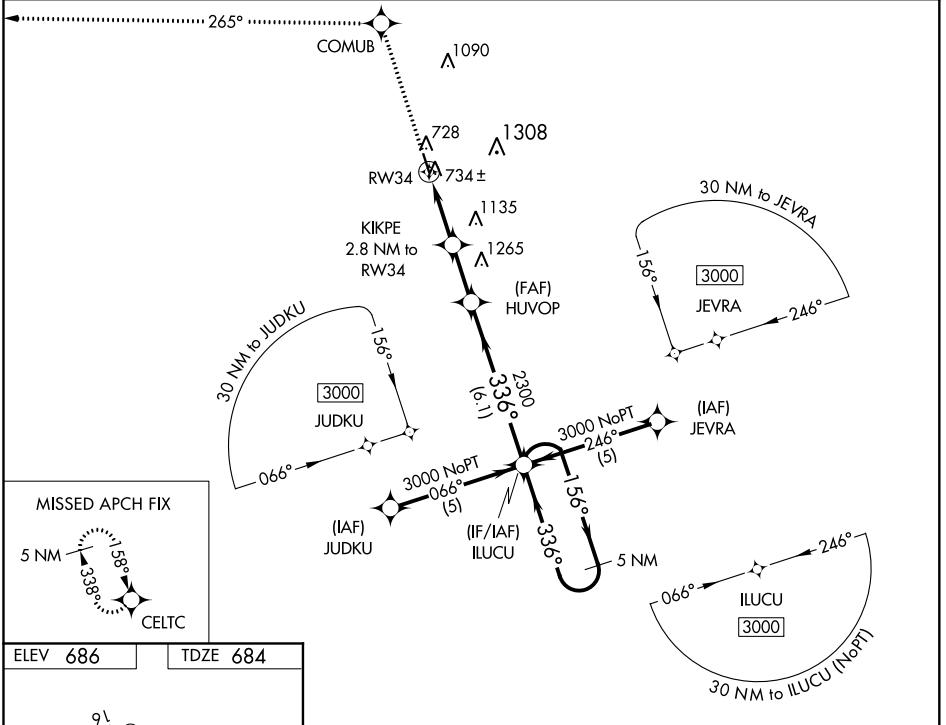
RNAV (GPS) RWY 34

HILLSBORO MUNI (INJ)

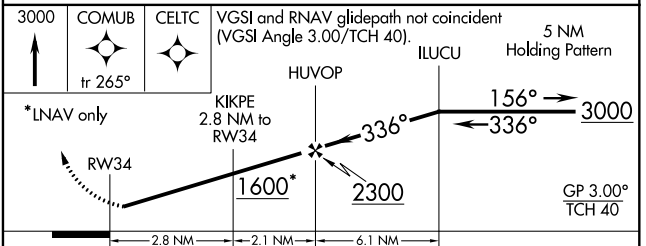
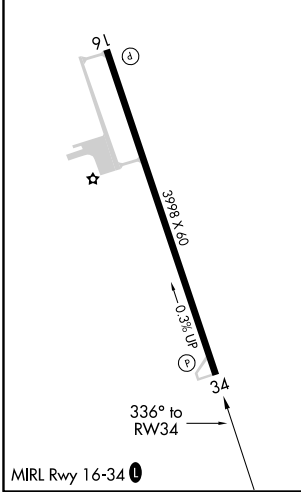
Baro-VNAV NA when using Cleburne Rgnl altimeter setting. DME/DME RNP-0.3 NA. For uncompensated Baro-VNAV systems, LNAV/VNAV NA below -16°C (4°F) or above 54°C (130°F). Visibility reduction by helicopters NA. When local altimeter setting not received use Cleburne Rgnl altimeter setting and increase all DA/MDA 80 feet, increase LPV and LNAV/VNAV visibility ¼ mile all Cats.

MISSED APPROACH:
Climb to 3000 direct COMUB and via 265° track to CELTC and hold.

| | | |
|----------------------------|---------------------------------------|-----------------------|
| AWOS-3PT 118.725 | WACO APP CON ★ 127.65 352.0 | CTAF 122.90 |
|----------------------------|---------------------------------------|-----------------------|



| | |
|-----------------|-----------------|
| ELEV 686 | TDZE 684 |
|-----------------|-----------------|



| CATEGORY | A | B | C | D |
|--------------|---------|--------------|---|----|
| LPV DA | 934-1 | 250 (300-1) | | NA |
| LNAV/VNAV DA | 1004-1¼ | 320 (400-1¼) | | NA |
| LNAV MDA | 1320-1 | 636 (700-1) | | NA |
| CIRCLING | 1320-1 | 634 (700-1) | | NA |

SC-2, 19 MAY 2022 to 16 JUN 2022

SC-2, 19 MAY 2022 to 16 JUN 2022