

KIANA, ALASKA

AL-10234 (FAA)

22083

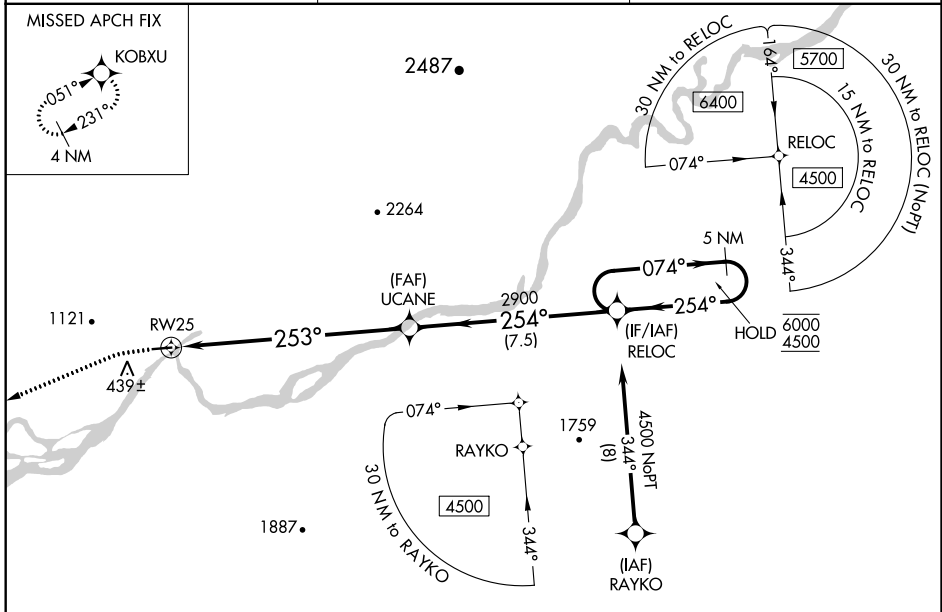
WAAS CH 63143 W25A	APP CRS 253°	Rwy ldg 4000 TDZE 147 Apt Elev 181
--	------------------------	---

RNAV (GPS) RWY 25

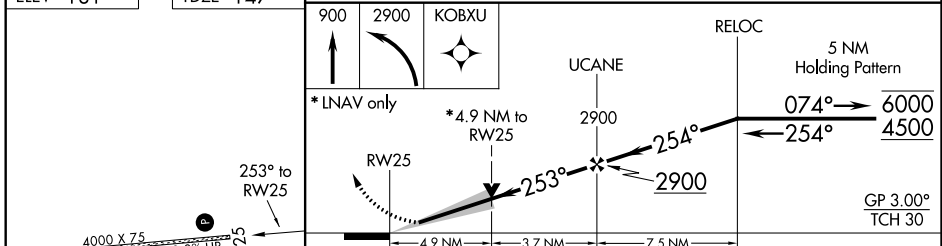
BOB BAKER MEML (IAN) (PAIK)

RNP APCH.	MISSED APPROACH: Climb to 900 then climbing left turn to 2900 direct KOBXU and hold. #Missed approach requires minimum climb of 335 feet per NM to 1440.
NA -28°C	Circling NA north of Rwy 7-25. Circling Rwy 7 NA at night. Baro-VNAV NA.

AWOS-3P 119.025	ANCHORAGE CENTER 119.2 263.0	CTAF 122.70
---------------------------	--	-----------------------



ELEV 181	TDZE 147	1333
-----------------	-----------------	------



CATEGORY	A	B	C	D
LPV DA#		422-1	275 (300-1)	
LPV DA		611-1 $\frac{3}{8}$	464 (500-1 $\frac{3}{8}$)	
LNAV/VNAV DA		779-1 $\frac{3}{4}$	632 (600-1 $\frac{3}{4}$)	
LNAV MDA	1740-1 $\frac{1}{4}$ 1593 (1600-1 $\frac{1}{2}$)	1740-1 $\frac{1}{2}$ 1593 (1600-1 $\frac{1}{2}$)	1740-3	1593 (1600-3)
CIRCLING	1740-1 $\frac{1}{4}$ 1559 (1600-1 $\frac{1}{4}$)	1740-1 $\frac{1}{2}$ 1559 (1600-1 $\frac{1}{2}$)	1740-3	1559 (1600-3)

MIRL Rwy 7-25
REL Rwy 25

KIANA, ALASKA
Amdt 1 31DEC20

66°59'N-160°26'W

BOB BAKER MEML (IAN) (PAIK)

RNAV (GPS) RWY 25

AK, 19 MAY 2022 to 14 JUL 2022

AK, 19 MAY 2022 to 14 JUL 2022