

WAAS CH 56533 W18A	APP CRS 183°	Rwy Idg 4400 TDZE 898 Apt Elev 898
----------------------------------------	------------------------	---------------------------------------------------------------

RNAV (GPS) RWY 18

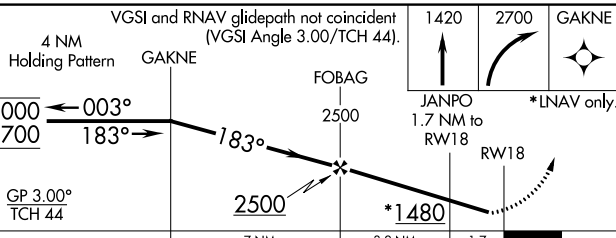
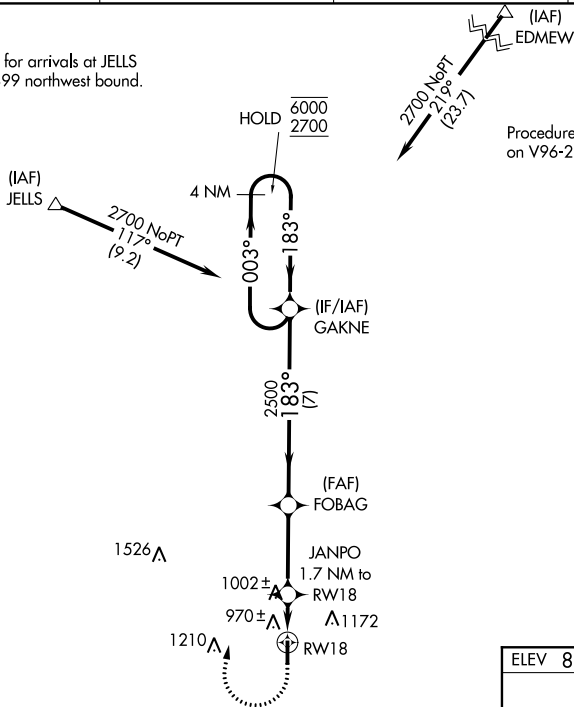
HENDRICKS COUNTY-GORDON GRAHAM FLD (2R2)

RNP APCH - GPS.	MISSED APPROACH: Climb to 1420 then climbing right turn to 2700 direct GAKNE and hold.
▼ Rwy 18 helicopter visibility reduction below 3/4 SM NA. ▲ NA Baro-VNAV NA. Use Indianapolis Intl altimeter setting.	

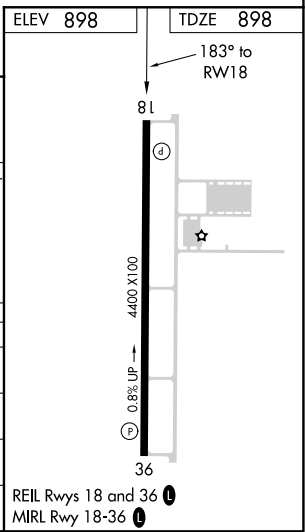
AWOS-3P 118.025	IND ASOS 134.25	INDIANAPOLIS APP CON 121.1	UNICOM 122.7 (CTAF)
---------------------------	---------------------------	--------------------------------------	-------------------------------

Procedure NA for arrivals at JELLS on V24-128-399 northwest bound.

Procedure NA for arrivals at EDMEW on V96-285 northbound.



CATEGORY	A	B	C	D
LPV DA	1215-7/8	317 (400-7/8)		NA
LNAV/VNAV DA	1242-1	344 (400-1)		NA
LNAV MDA	1300-1	402 (500-1)	1300-1 1/8 402 (500-1 1/8)	NA
CIRCLING	1380-1 482 (500-1)	1560-1 662 (700-1)	1600-2 702 (800-2)	NA



EC-2, 19 MAY 2022 to 16 JUN 2022

EC-2, 19 MAY 2022 to 16 JUN 2022