

WAAS CH <b>45833</b> <b>W36A</b>	APP CRS <b>003°</b>	Rwy Idg TDZE Apt Elev	<b>4400</b> <b>884</b> <b>898</b>
--	------------------------	-----------------------------	---

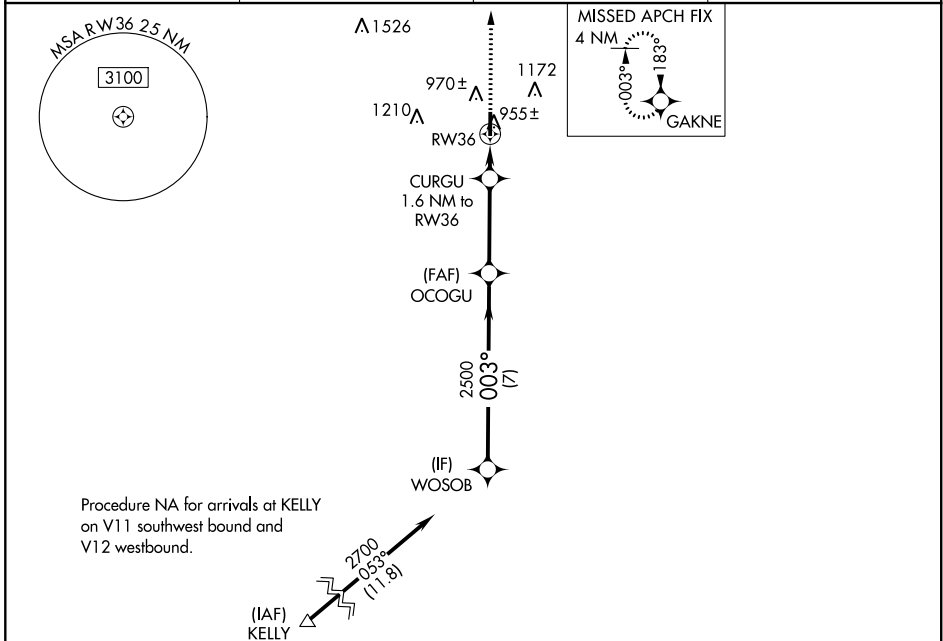
# RNAV (GPS) RWY 36

HENDRICKS COUNTY-GORDON GRAHAM FLD (2R2)

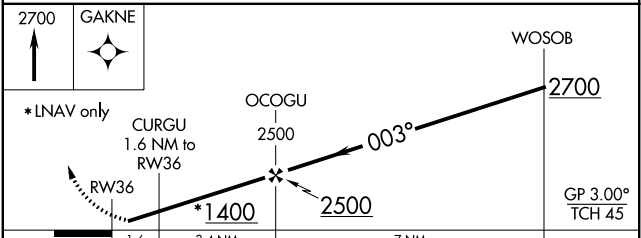
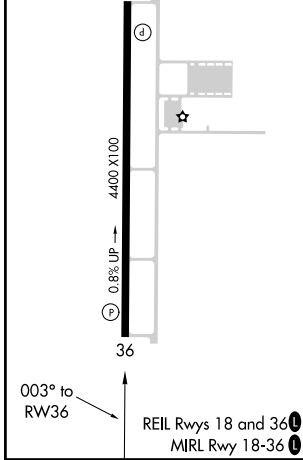
**NA** Baro-VNAV NA. DME/DME RNP-0.3 NA.  
Use Indianapolis Intl altimeter setting.  
Helicopter visibility reduction below 3/4 SM NA.

MISSED APPROACH: Climb to 2700 direct GAKNE and hold.

AWOS-3P <b>118.025</b>	IND ASOS <b>134.25</b>	INDIANAPOLIS APP CON <b>121.1</b>	UNICOM <b>122.7 (CTAF)</b>
---------------------------	---------------------------	--------------------------------------	-------------------------------



ELEV 898	TDZE 884
----------	----------



CATEGORY	A	B	C	D
LPV DA	1168-7/8	284 (300-7/8)		NA
LNAV/VNAV DA	1168-7/8	284 (300-7/8)		NA
LNAV MDA	1240-1	356 (400-1)		NA
<b>CIRCLING</b>	1380-1 482 (500-1)	1560-1 662 (700-1)	1600-2 702 (800-2)	NA

EC-2, 19 MAY 2022 to 16 JUN 2022

EC-2, 19 MAY 2022 to 16 JUN 2022