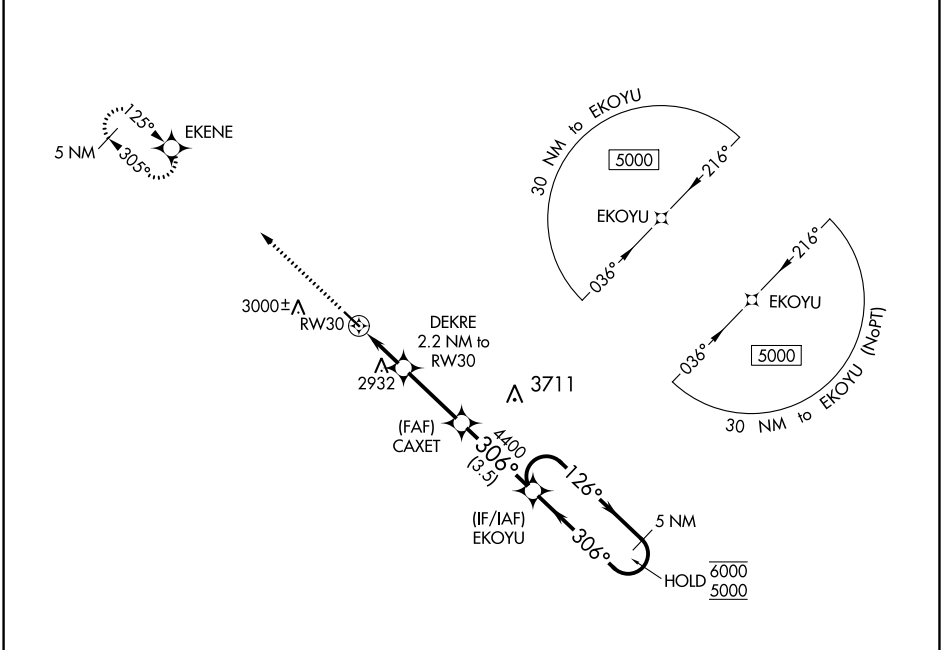


WAAS CH 66038 W30A	APP CRS 306°	Rwy Idg TDZE Apt Elev	4200 2754 2756
--	------------------------	-----------------------------	---

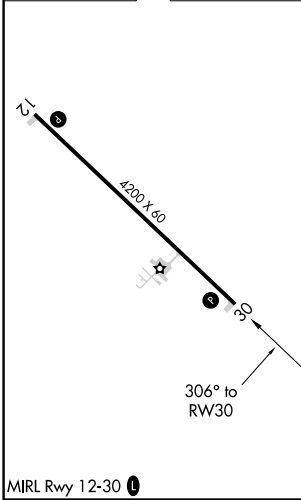
RNAV (GPS) RWY 30

BEACH (2ØU)

RNP APCH.		MISSED APPROACH: Climb to 4700 direct EKENE and hold.
▼ For uncompensated Baro-VNAV systems, LNAV/VNAV NA below -20°C or above 54°C. Rwy 30 helicopter visibility reduction below ¾ SM NA.		
AWOS-3 118.175	SALT LAKE CENTER 126.85 305.2	UNICOM 122.8 (CTAF) 0



ELEV 2756	TDZE 2754
-----------	-----------



4700	EKENE	VGSI and RNAV glidepath not coincident (VGSI Angle 3.00/TCH 27).	5 NM Holding Pattern
* LNAV only	DEKRE 2.2 NM to RW30	CAXET 4400	EKOYU
	* 1.3 NM to RW30	* 3480	4400
	1.3 NM	0.9 NM	2.9 NM
			3.5 NM
			6000
			5000
			GP 3.00° TCH 40
CATEGORY	A	B	C
LPV DA	3004-1	250 (300-1)	NA
LNAV/VNAV DA	3175-1½	421 (500-1½)	NA
LNAV MDA	3180-1	426 (500-1)	NA
CIRCLING	3280-1 524 (600-1)	3360-1 604 (700-1)	NA

NC-1, 19 MAY 2022 to 16 JUN 2022

NC-1, 19 MAY 2022 to 16 JUN 2022