

WAAS CH <b>65742</b> <b>W10A</b>	APP CRS <b>124°</b>	Rwy Idg TDZE Apt Elev <b>5728</b> <b>5931</b> <b>5933</b>
--	------------------------	--

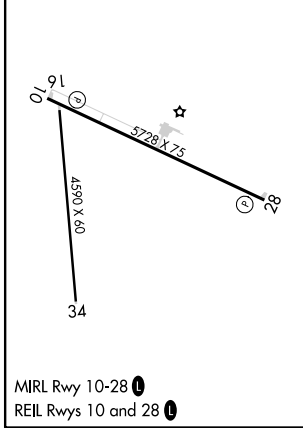
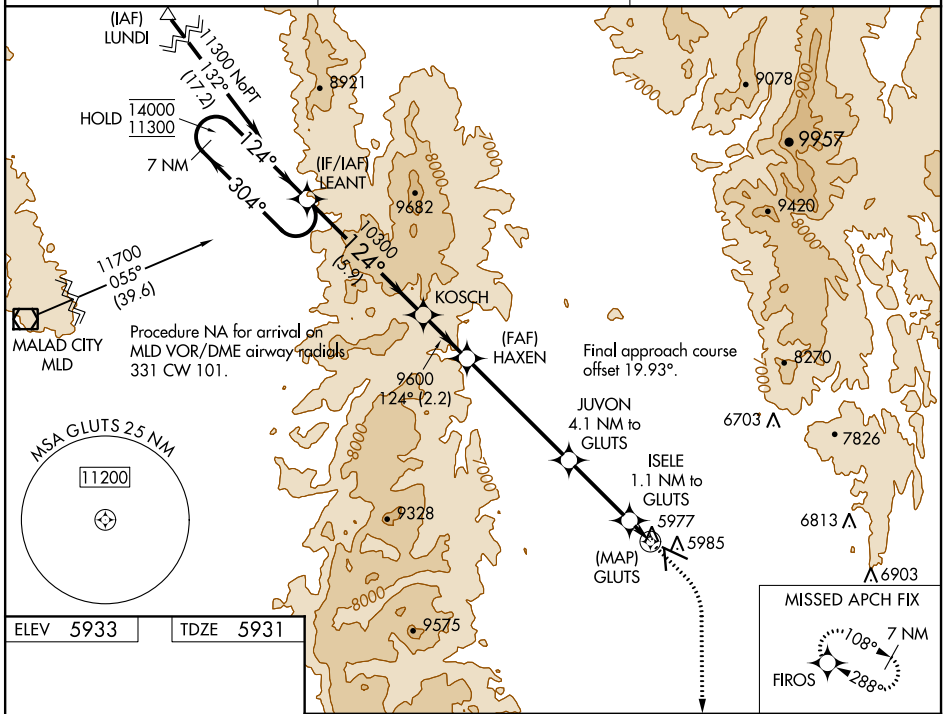
# RNAV (GPS) RWY 10

BEAR LAKE COUNTY (1U7)

RNP APCH.  
 When local altimeter setting not received, procedure NA.  
 -23°C

MISSED APPROACH: (Do not exceed 185K until FIROs)  
 Climb to 6340 then climbing right turn to 11000 direct FIROs and hold.

AWOS-3 <b>118.525</b>	SALT LAKE CENTER <b>128.35 239.25</b>	UNICOM <b>122.8 (CTAF)</b>
--------------------------	--	-------------------------------



	7 NM Holding Pattern	LEANT	KOSCH	HAXEN	JUVON	ISELE	GLUTS	FIROs
	14000	11300	10300	9600	7680	6540	6340	11000
		304°	124°	124°	3.50° TCH 45	1.1 NM to GLUTS	GLUTS	
CATEGORY	A	B	C	D				
LP MDA		6240-1	309 (400-1)					
LNAV MDA		6260-1	329 (400-1)					
CIRCLING	6320-1 387 (400-1)	6400-1 467 (500-1)	6720-2¼ 787 (800-2¼)	7140-3 1207 (1300-3)				

NW-1, 19 MAY 2022 to 16 JUN 2022

NW-1, 19 MAY 2022 to 16 JUN 2022