

WAAS CH 62842 W28A	APP CRS 284°	Rwy Idg TDZE Apt Elev	5728 5933 5933
--	------------------------	-----------------------------	---

RNAV (GPS) RWY 28

BEAR LAKE COUNTY (1U7)

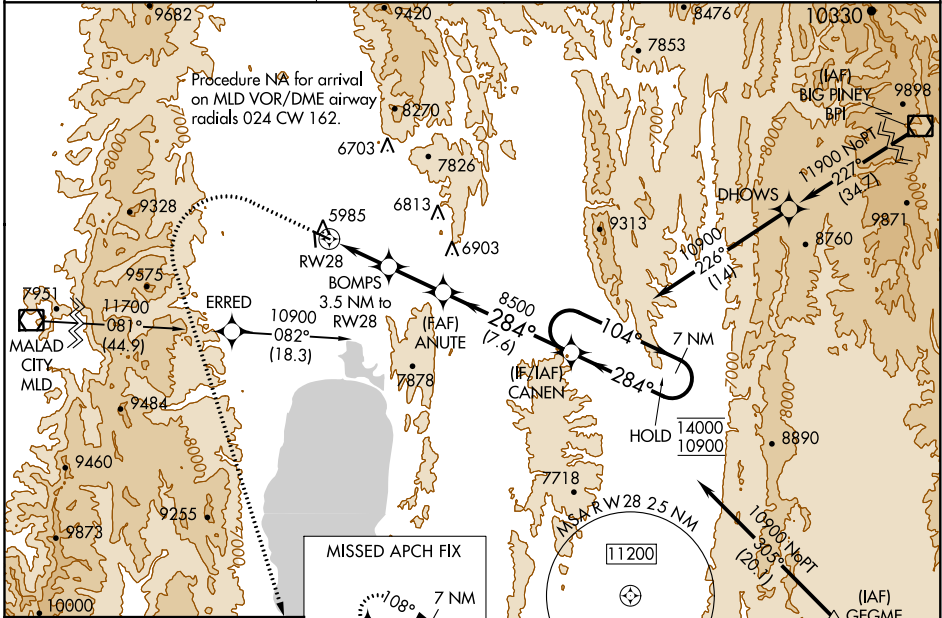
RNP APCH.

Baro-VNAV NA.
When local altimeter setting not received, procedure NA.

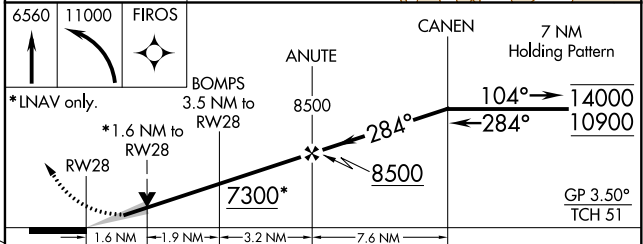
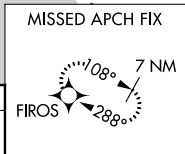
⚠ -23°C

MISSED APPROACH: (Do not exceed 185K until FROS)
Climb to 6560 then climbing left turn to 11000 direct FROS and hold.

AWOS-3 118.525	SALT LAKE CENTER 128.35 239.25	UNICOM 122.8 (CTAF) 0
--------------------------	--	---------------------------------



ELEV 5933	TDZE 5933
-----------	-----------



CATEGORY	A	B	C	D
LPV DA	6275-1		342 (400-1)	
LNAV/VNAV DA	6365-1¼		432 (500-1¼)	
LNAV MDA	6560-1	627 (700-1)	6560-1¾	627 (700-1¾)
C CIRCLING	6560-1	627 (700-1)	6720-2¼ 787 (800-2¼)	7140-3 1207 (1300-3)

MIRL Rwy 10-28 0
REIL Rwy 10 and 28 0

NW-1, 19 MAY 2022 to 16 JUN 2022

NW-1, 19 MAY 2022 to 16 JUN 2022