

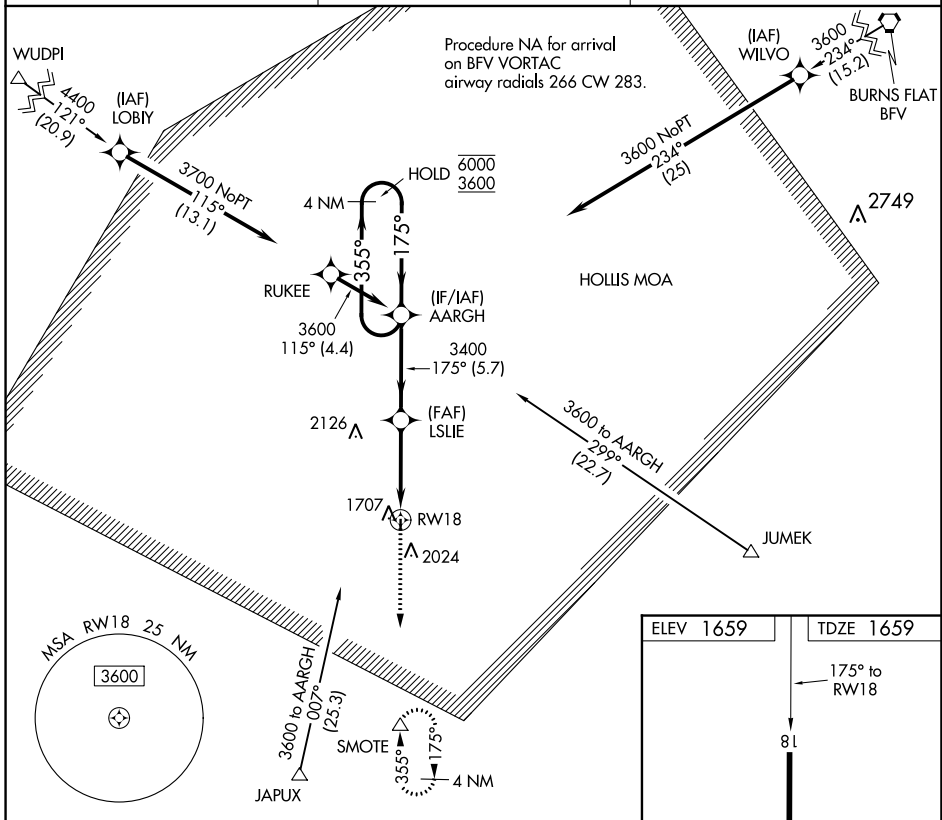
APP CRS	Rwy Idg	<b>3000</b>
<b>175°</b>	TDZE	<b>1659</b>
	Apt Elev	<b>1659</b>

# RNAV (GPS) RWY 18

HOLLIS MUNI (O35)

RNP APCH.	<p>▼ Rwy 18 helicopter visibility reduction below 1 SM NA.                  ▲ Straight-in Rwy 18 and Circling Rwy 18 NA at night.                  Use Altus/Quartz Mountain Rgnl altimeter setting.</p>	<p>MISSED APPROACH: Climb to 3700 direct SMOTE and hold.</p>

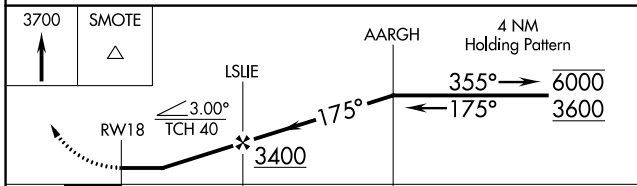
AXS AWOS-3PT <b>118.825</b>	ALTUS APP CON * <b>125.1 353.7</b>	CTAF <b>122.9</b>
--------------------------------	---------------------------------------	----------------------



SC-1, 19 MAY 2022 to 16 JUN 2022

SC-1, 19 MAY 2022 to 16 JUN 2022

ELEV 1659	TDZE 1659
<p>175° to RW18</p> <p>81</p> <p>60 x 0000</p> <p>36</p>	
<p>MIRL Rwy 18-36</p>	



CATEGORY	A	B	C	D
LNVA MDA	2400-1 741 (800-1)	2400-1¼ 741 (800-1¼)	NA	
CIRCLING	2400-1 741 (800-1)	2480-1¼ 821 (900-1¼)	NA	