

WAAS CH <b>50522</b> <b>W18A</b>	APP CRS <b>178°</b>	Rwy Idg TDZE Apt Elev	<b>4001</b> <b>285</b> <b>285</b>
--	------------------------	-----------------------------	---

# RNAV (GPS) RWY 18

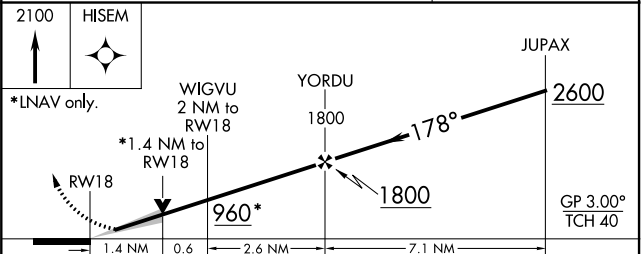
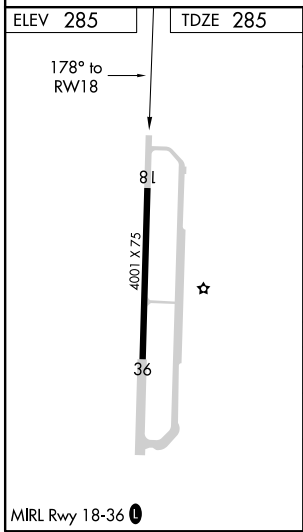
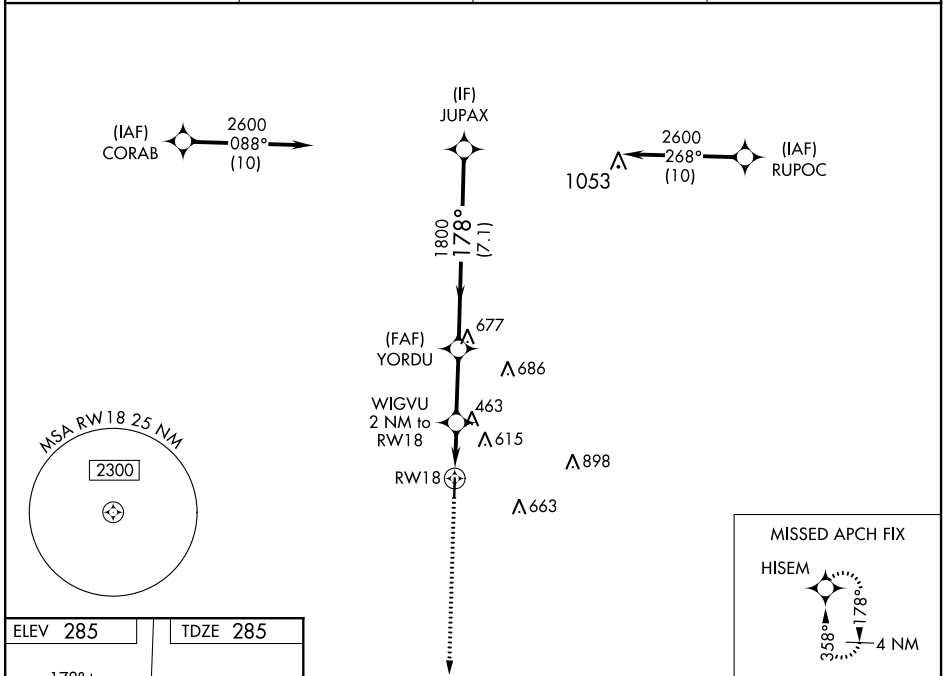
HEARNE MUNI (LHB)

RNP APCH.

**▲** Baro-VNAV and VDP NA when using College Station altimeter setting. For uncompensated Baro-VNAV systems, LNAV/VNAV NA below -15°C or above 54°C.

MISSED APPROACH: Climb to 2100 direct HISEM and hold.

AWOS-3 <b>118.675</b>	HOUSTON APP CON <b>134.3 360.85</b>	CTAF <b>122.9</b>	<b>123.3 0</b>
--------------------------	--	----------------------	----------------



CATEGORY	A	B	C	D
LPV DA	485- <sup>3</sup> / <sub>4</sub>	200 (200- <sup>3</sup> / <sub>4</sub> )		NA
LNAV/VNAV DA	583-1	298 (300-1)		NA
LNAV MDA	780-1	495 (500-1)	780-1 <sup>3</sup> / <sub>8</sub> 495 (500-1 <sup>3</sup> / <sub>8</sub> )	NA
CIRCLING	800-1 515 (600-1)	920-1 635 (700-1)	1020-2 735 (800-2)	NA

SC-5, 19 MAY 2022 to 16 JUN 2022

SC-5, 19 MAY 2022 to 16 JUN 2022