

| | | |
|--|------------------------|---|
| WAAS CH 87122 W36A | APP CRS 358° | Rwy Idg TDZE 284 Apt Elev 285 |
|--|------------------------|---|

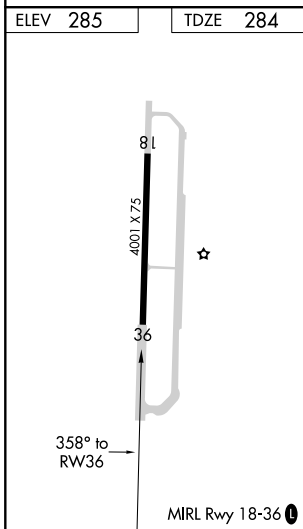
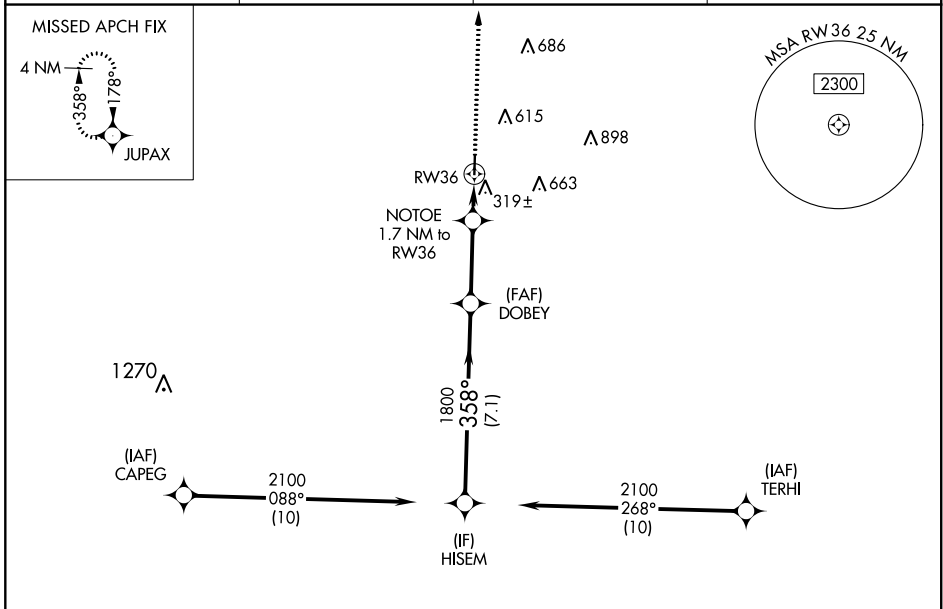
RNAV (GPS) RWY 36

HEARNE MUNI (LHB)

⚠ For uncompensated Baro-VNAV systems, LNAV/VNAV NA below -15°C (5°F) or above 54°C (130°F). DME/DME RNP-0.3 NA. When local altimeter setting not received, use College Station altimeter setting and increase all DA 55 feet and all MDA 60 feet. Increase LPV, LNAV/VNAV all Cats and LNAV Cat C visibility 1/8 mile. Increase Circling Cat C visibility 1/4 mile. Baro-VNAV and VDP NA when using College Station altimeter setting.

MISSED APPROACH: Climb to 2600 direct JUPAX and hold.

| | | | |
|--------------------------|--|----------------------|-----------------------|
| AWOS-3 118.675 | HOUSTON APP CON 134.3 360.85 | CTAF 122.9 | 123.3 Q |
|--------------------------|--|----------------------|-----------------------|



RADAR REQUIRED

| CATEGORY | A | B | C | D |
|--------------|----------------------|----------------------|--------------------------|----|
| LPV DA | 484-3/4 | 200 (200-3/4) | | NA |
| LNAV/VNAV DA | 534-7/8 | 250 (300-7/8) | | NA |
| LNAV MDA | 580-1 | 296 (300-1) | 580-7/8 296 (300-7/8) | NA |
| CIRCLING | 800-1 515 (600-1) | 920-1 635 (700-1) | 1020-2 735 (800-2) | NA |

SC-5, 19 MAY 2022 to 16 JUN 2022

SC-5, 19 MAY 2022 to 16 JUN 2022