

(BOI3.BOI) 21112

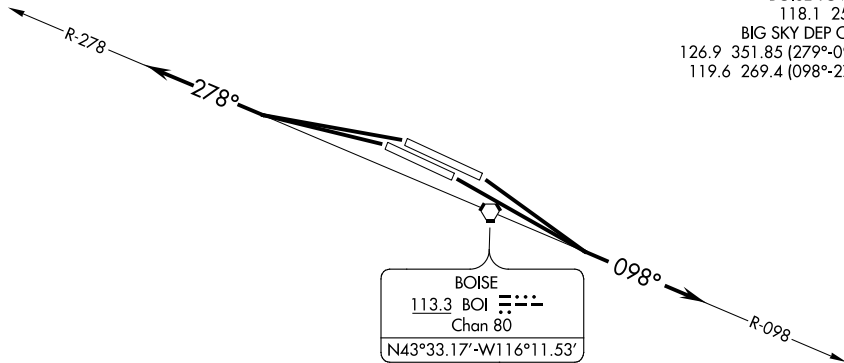
BOISE THREE DEPARTURE

AL-57 (FAA)

BOISE AIR TRML/GOWEN FLD (BOI)
BOISE, IDAHO

**TOP ALTITUDE:
16000**

D-ATIS
123.9 290.4
CLNC DEL
125.9 323.2
GND CON
121.7 348.6
BOISE TOWER
118.1 257.8
BIG SKY DEP CON
126.9 351.85 (279°-097°)
119.6 269.4 (098°-278°)



NOTE: RADAR required.

TAKEOFF MINIMUMS

Rwys 28L/R: Standard.

Rwys 10L/R: Standard with minimum climb of 240' per NM to 5700.

NOTE: Chart not to scale.



DEPARTURE ROUTE DESCRIPTION

TAKEOFF RUNWAY 10L/R: Climb to 16000 or lower assigned altitude on BOI VORTAC R-098, thence. . . .

TAKEOFF RUNWAY 28L/R: Climb to 16000 or lower assigned altitude on BOI VORTAC R-278, thence. . . .

. . . .Expect RADAR vectors to assigned route, expect filed altitude 10 minutes after departure.

LOST COMMUNICATIONS: If not in contact with Boise Departure Control at 10000 or assigned altitude if lower, continue climb to assigned altitude and thence on assigned route.

BOISE THREE DEPARTURE

(BOI3.BOI) 26MAY16

BOISE, IDAHO
BOISE AIR TRML/GOWEN FLD (BOI)

NW-1, 16 JUN 2022 to 14 JUL 2022

NW-1, 16 JUN 2022 to 14 JUL 2022