

BOISE, IDAHO

# HI-ILS Z or LOC Z RWY 10R

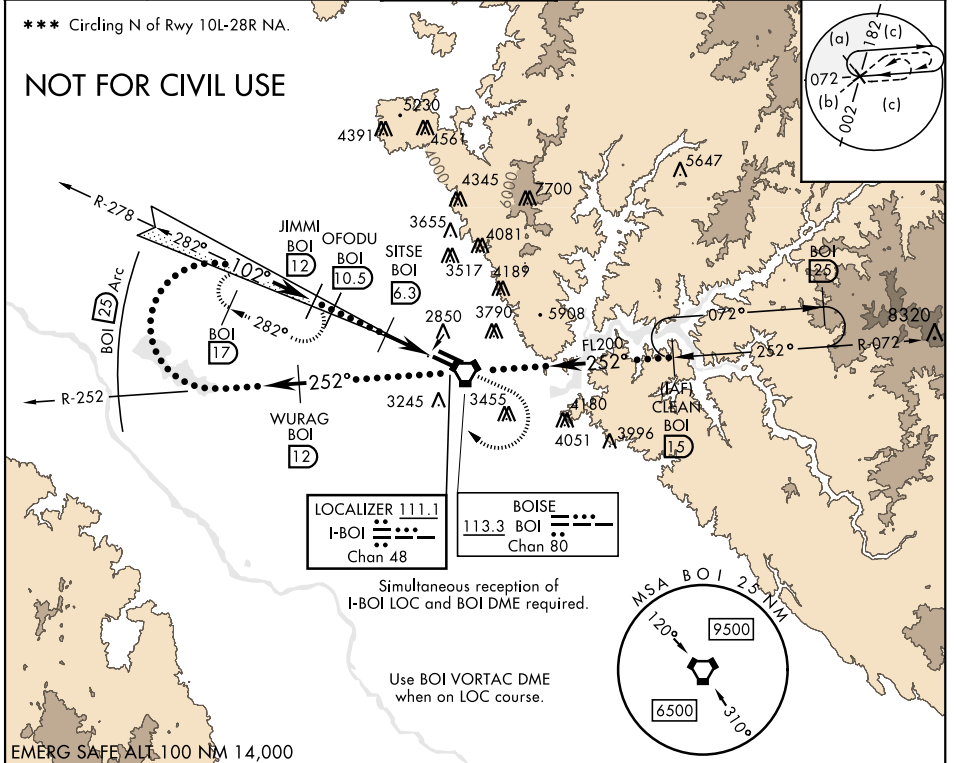
LOC I-BOI <b>111.1</b>	APCH CRS <b>102°</b>	Rwy Ldg TDZE Arprt Elev <b>9763</b> <b>2836</b> <b>2872</b>	AL-57 [USAF]	BOISE AIR TERMINAL (GOWEN FLD)	(KBOI)
---------------------------	-------------------------	--	--------------	--------------------------------	--------

DME required.	ALSF-2	MISSED APPROACH: Climb to 3700 then climbing right turn to 5000 on heading 320° and BOI VORTAC R-278 to JIMMI/BOI 12 DME and hold.
---------------	--------	--

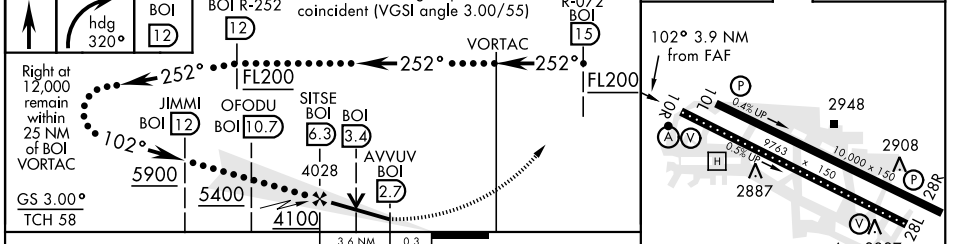
ATIS <b>123.9 290.4</b>	BIG SKY APP CON <b>119.6 269.4</b>	BOISE TOWER <b>118.1 257.8</b>	GND CON <b>121.7 348.6</b>	CLNC DEL <b>125.9 323.2</b>	ASOS
----------------------------	---------------------------------------	-----------------------------------	-------------------------------	--------------------------------	------

\*\*\* Circling N of Rwy 10L-28R NA.

## NOT FOR CIVIL USE



EMERG SAFE ALL 100 NM 14,000	ELEV 2872	TDZE 2836
------------------------------	-----------	-----------



CATEGORY	C	D	E
S-ILS 10R *	3036/18	200	(200-1/2)
S-LOC 10R **	3180/30	344	(400-3/8)
CIRCLING ***	3740-2 1/2 869 (900-2 1/2)	3820-3	949 (1000-3)

TDZL/CL Rwy 10R-28L  
HIRL Rwy 10L-28R, 10R-28L  
REIL Rwy 10L

BOISE, IDAHO 43°34'N-116°13'W BOISE AIR TERMINAL (GOWEN FLD) (KBOI)

Amtd 4 24MAR22

# HI-ILS Z or LOC Z RWY 10R

NW-1, 16 JUN 2022 to 14 JUL 2022

NW-1, 16 JUN 2022 to 14 JUL 2022