

BOISE, IDAHO

HI-VOR/DME or TACAN RWY 10R

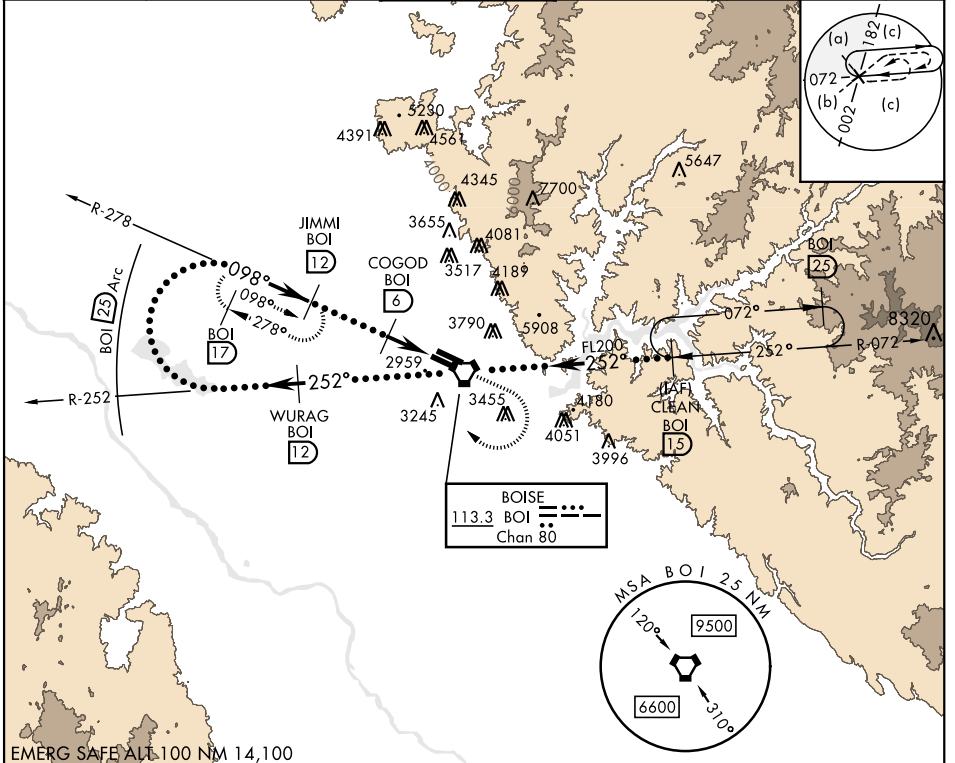
VORTAC BOI 113.3 Chan 80	APCH CRS 098°	Rwy Idg 9763 TDZE 2836 Arprt Elev 2872	AL-57 [USAF]	BOISE AIR TERMINAL (GOWEN FLD) (KBOI)
--	-------------------------	---	--------------	---------------------------------------

* When ALS inop, increase CAT DE RVR to 60 and vis to 1¼ miles.
 ** Circling N of Rwy 10L-28R NA.

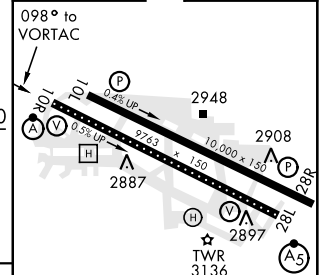
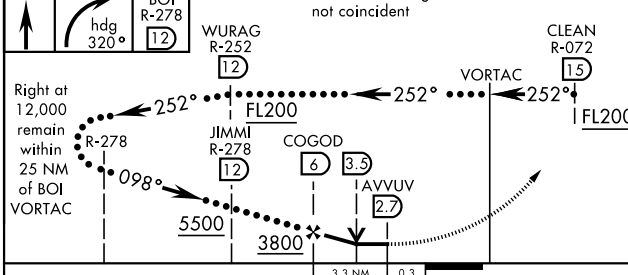


MISSED APPROACH: Climb to 3700 then climbing right turn to 5000 via heading 320° to intercept BOI VORTAC R-278 then direct JIMMI/12 DME and hold

ATIS 123.9 290.4	BIG SKY APP CON 119.6 269.4	BOISE TOWER 118.1 257.8	GND CON 121.7 348.6	CLNC DEL 125.9 323.2	ASOS
----------------------------	---------------------------------------	-----------------------------------	-------------------------------	--------------------------------	------



EMERG SAFE ALL 100 NM 14,100



CATEGORY	C	D	E
S-10R *	3220/24 384 (400-½)	3220/50	384 (400-1)
CIRCLING **	3440-1½ 569 (600-1½)	3440-2 569 (600-2)	3860-3 989 (1000-3)

TDZL/CL Rwy 10R-28L
 HIRL Rwy 10L-28R, 10R-28L
 REIL Rwy 10L

BOISE, IDAHO 43°34'N-116°13'W BOISE AIR TERMINAL (GOWEN FLD) (KBOI)

Amtd 1 07MAR13

HI-VOR/DME or TACAN RWY 10R

NW-1, 16 JUN 2022 to 14 JUL 2022

NW-1, 16 JUN 2022 to 14 JUL 2022