

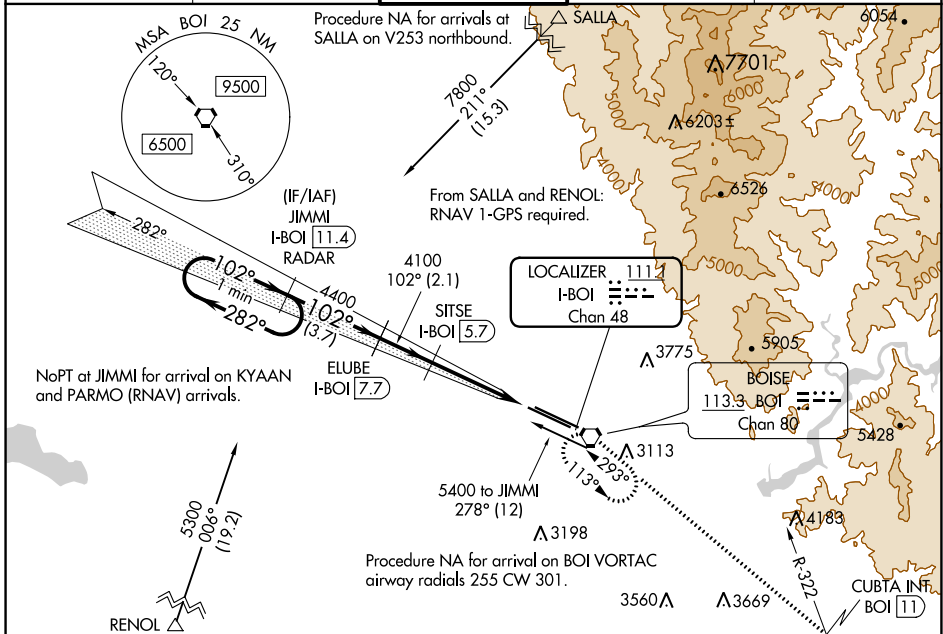
LOC/DME I-BOI 111.1 Chan 48	APP CRS 102°	Rwy ldg TDZE Apt Elev 9763 2836 2871
---	------------------------	--

ILS Y RWY 10R (CAT II & III)

BOISE AIR TRML/GOWEN FLD (BOI)

<p>V DME required.</p> <p>A CAT II: RVR 1000 authorized with specific OPSPEC, MSPEC, or LOA approval and use of autoland or HUD to touchdown.</p>	<p>ALSIF-2</p>	<p>MISSED APPROACH: Climb to 6000 on BOI VORTAC R-113 to CUBTA INT/BOI VORTAC 11 DME and right turn direct BOI VORTAC and hold.</p>
---	----------------	---

D-ATIS 123.9 290.4	BIG SKY APP CON 119.6 269.4	BOISE TOWER 118.1 257.8	GND CON 121.7 348.6	CLNC DEL 125.9 323.2
------------------------------	---------------------------------------	--	-------------------------------	--------------------------------

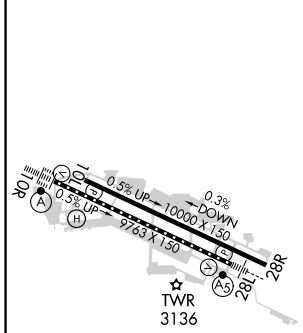


NW-1, 16 JUN 2022 to 14 JUL 2022

NW-1, 16 JUN 2022 to 14 JUL 2022

ELEV 2871	D TDZE 2836
-----------	--------------------

RADAR or DME REQUIRED



<p>VGSI and descent angles not coincident (VGSI Angle 3.00/TCH 64).</p>			
<p>One Minute Holding Pattern</p> <p>JIMMI I-BOI 11.4 RADAR</p>	<p>ELUBE I-BOI 7.7</p>	<p>SITSE I-BOI 5.7</p>	<p>BOI R-113</p>
<p>Use I-BOI DME when on the localizer course.</p>			<p>CUBTA INT</p>
<p>BOI</p>			

CATEGORY	A	B	C	D
S-ILS 10R	CAT II RA 102/12 100 DA 2936			
S-ILS 10R	CAT III RVR 03			

CATEGORY II & III ILS - SPECIAL AIRCREW & AIRCRAFT CERTIFICATION REQUIRED

REIL Rwy 10L
TDZ/CL Rwys 10R and 28L
HIRL Rwys 10L-28R and 10R-28L

BOISE, IDAHO
Amdt 13 29MAR18

BOISE AIR TRML/GOWEN FLD (BOI)
43°34'N-116°13'W **ILS Y RWY 10R (CAT II & III)**