

LOC/DME I-BOI	APP CRS	Rwy ldg	9763
111.1	102°	TDZE	2836
Chan 48		Apt Elev	2871

ILS Y RWY 10R (SA CAT I)

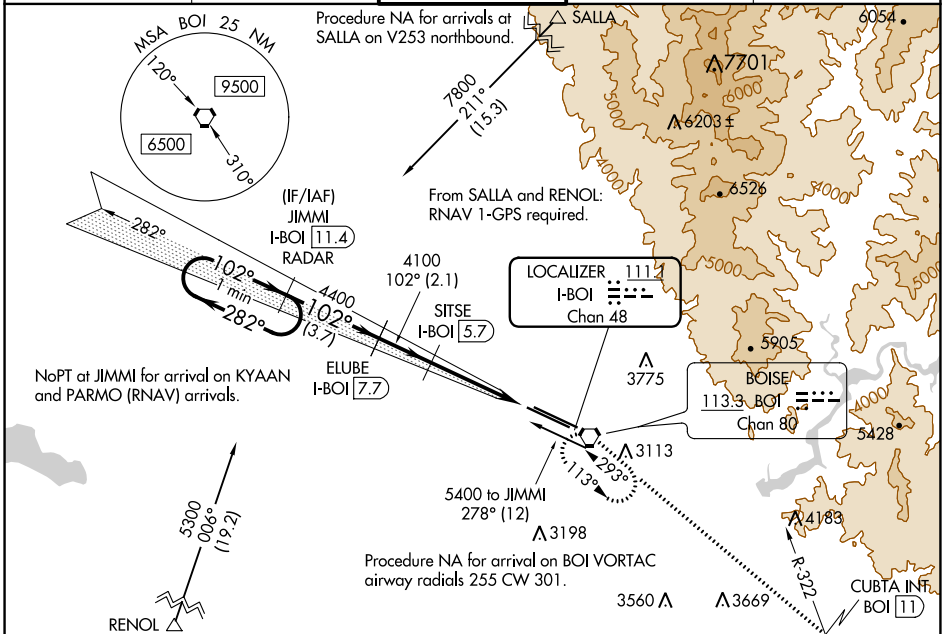
BOISE AIR TRML/GOWEN FLD (BOI)

DME required.
Requires specific OPSPEC, MSPEC, or LOA approval and use of HUD to DH.

ALSF-2
Rwy 10R

MISSED APPROACH: Climb to 6000 on BOI VORTAC R-113 to CUBTA INT/BOI VORTAC 11 DME and right turn direct BOI VORTAC and hold.

D-ATIS	BIG SKY APP CON	BOISE TOWER	GND CON	CLNC DEL
123.9 290.4	119.6 269.4	118.1 257.8	121.7 348.6	125.9 323.2

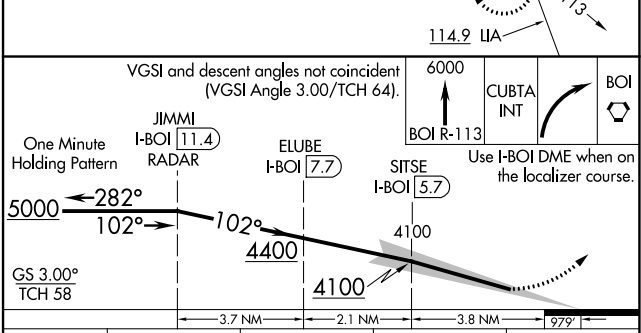
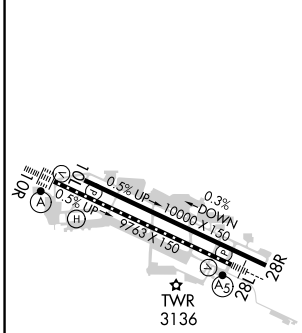


NW-1, 16 JUN 2022 to 14 JUL 2022

NW-1, 16 JUN 2022 to 14 JUL 2022

ELEV 2871	D TDZE 2836
-----------	--------------------

RADAR or DME REQUIRED



CATEGORY	A	B	C	D
S-ILS 10R	RA 170/14 150 DA 2986			

SA CATEGORY I ILS - SPECIAL AIRCREW & AIRCRAFT CERTIFICATION REQUIRED

REIL Rwy 10L
TDZ/CL Rwy 10R and 28L
HIRL Rwy 10L-28R and 10R-28L