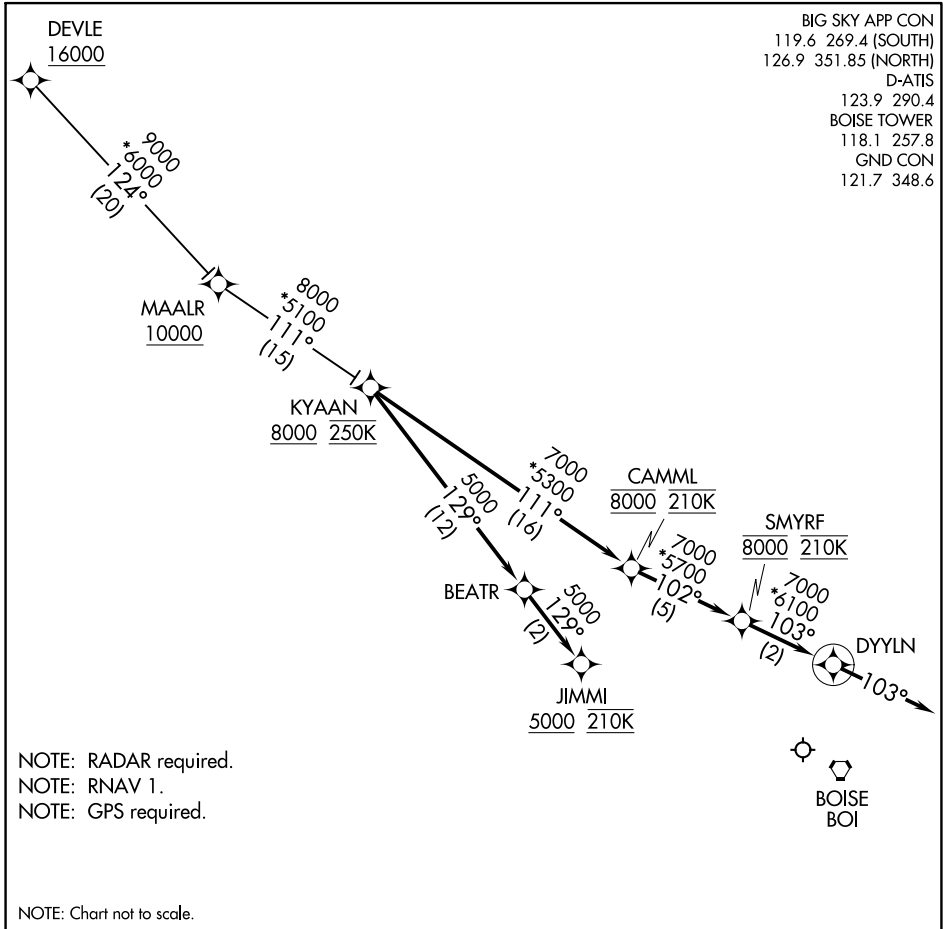


(KYAAN.KYAAN3) 21112

# KYAAN THREE ARRIVAL (RNAV)

AL-57 (FAA)

BOISE AIR TRML/GOWEN FLD (BOI)  
BOISE, IDAHO



NW-1, 16 JUN 2022 to 14 JUL 2022

NW-1, 16 JUN 2022 to 14 JUL 2022

## ARRIVAL ROUTE DESCRIPTION

### DEVLE TRANSITION (DEVLE.KYAAN3)

LANDING RUNWAYS 10L/R: From KYAAN on track 129° to BEATR, then on track 129° to cross JIMMI at or above 5000 and at 210K. Expect assigned approach or RADAR vectors to final approach course.

LANDING RUNWAYS 28L/R: From KYAAN on track 111° to cross CAMML at 8000 and at 210K, then on track 102° to cross SMYRF at 8000 and at 210K, then on track 103° to DYYLN, then on track 103°. Expect assigned approach or RADAR vectors to final approach course.

KYAAN THREE ARRIVAL (RNAV)  
(KYAAN.KYAAN3) 07DEC17

BOISE, IDAHO  
BOISE AIR TRML/GOWEN FLD (BOI)