

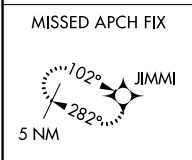
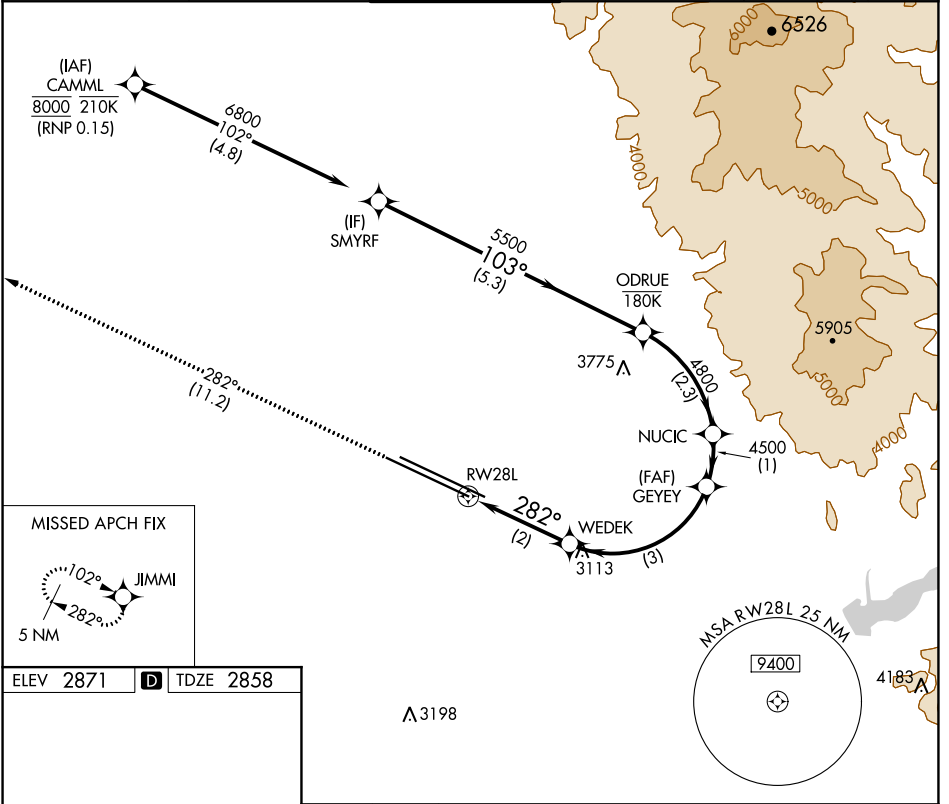
APP CRS	Rwy Idg	<b>9763</b>
<b>282°</b>	TDZE	<b>2858</b>
	Apt Elev	<b>2871</b>

# RNAV (RNP) X RWY 28L

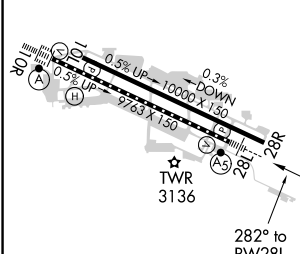
BOISE AIR TRML/GOWEN FLD (BOI)

NA For uncompensated Baro-VNAV systems, procedure NA below -1.4°C (7°F) or above 53°C (128°F). RF required. GPS required.	MALSR	MISSED APPROACH: Climb to 6000 on track 282° to JIMMI and hold, continue climb-in-hold to 6000.

D-ATIS	BIG SKY APP CON	BOISE TOWER	GND CON	CLNC DEL
<b>123.9 290.4</b>	<b>119.6 269.4</b>	<b>118.1 257.8</b>	<b>121.7 348.6</b>	<b>125.9 323.2</b>



ELEV 2871	<b>D</b>	TDZE 2858
-----------	----------	-----------



6000	JIMMI				
↑	fr 282°				
	WEDEK	GEYEE	NUCIC	ODRUE	SMYRF
	3548	4500	4800	5500	6800
	RW28L				GP 3.00°
					TCH 50
	2 NM	3 NM	1 NM	2.3 NM	5.3 NM
CATEGORY	A	B	C	D	
RNP 0.15 DA	3276/47 418 (500-1)				

REL Rwy 10L  
 TDZ/CL Rws 10R and 28L  
 HIRL Rws 10L-28R and 10R-28L

**AUTHORIZATION REQUIRED**

NW-1, 16 JUN 2022 to 14 JUL 2022

NW-1, 16 JUN 2022 to 14 JUL 2022