

APP CRS 282°	Rwy Idg 10000 TDZE 2871 Apt Elev 2871
------------------------	--

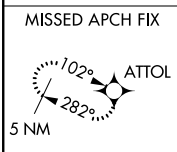
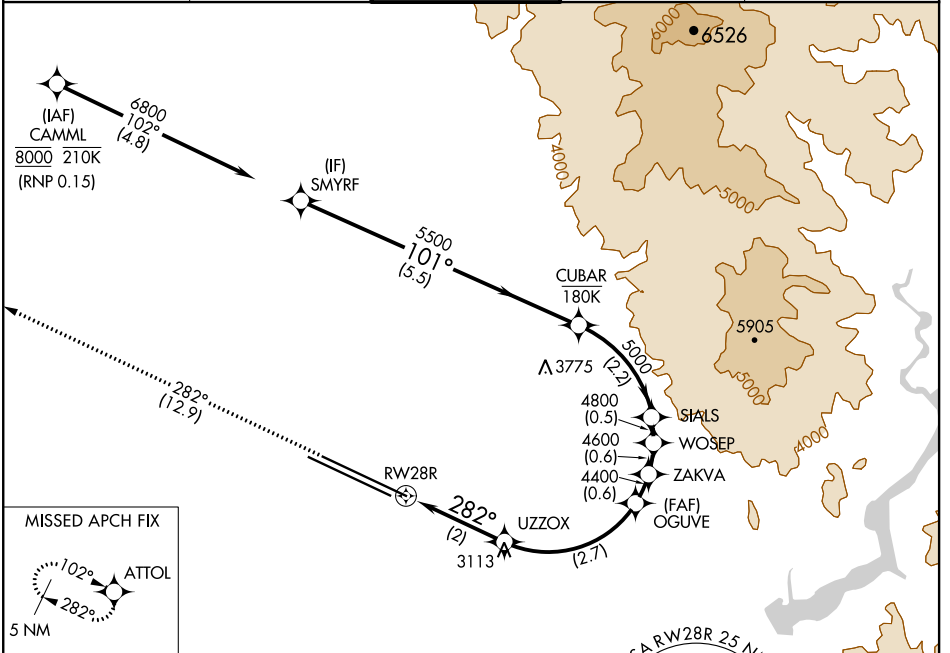
RNAV (RNP) X RWY 28R

BOISE AIR TRML/GOWEN FLD (BOI)

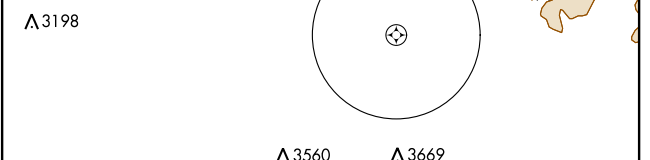
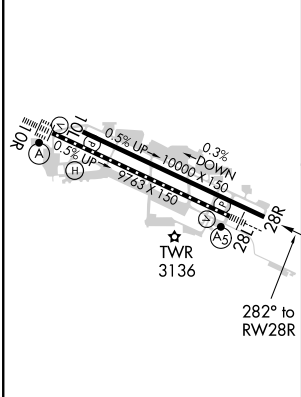
NA For uncompensated Baro-VNAV systems, procedure NA below -1.4°C (7°F) or above 52°C (126°F). RF required. GPS required.

MISSED APPROACH: Climb to 6000 on track 282° to ATTOL and hold.

D-ATIS 123.9 290.4	BIG SKY APP CON 119.6 269.4	BOISE TOWER 118.1 257.8	GND CON 121.7 348.6	CLNC DEL 125.9 323.2
------------------------------	---------------------------------------	-----------------------------------	-------------------------------	--------------------------------



ELEV 2871	D	TDZE 2871
-----------	----------	-----------



6000	ATTOL	VGSI and RNAV glidepath not coincident (VGSI Angle 3.00/TCH 70).				SMYRF		
tr 282°		OGUVE	ZAKVA	WOSEP	SIALS	CUBAR		
		3548	4400	4600	4800	5000		
			4400			5500		
						6800		
						GP 3.00° TCH 55		
		2 NM	2.7 NM	0.6 NM	0.6 NM	0.5 NM	2.2 NM	5.5 NM
CATEGORY		A	B	C	D			
RNP 0.15 DA		3288-1 ³ / ₈				417 (500-1 ³ / ₈)		

REIL Rwy 10L
TDZ/CL Rws 10R and 28L
HIRL Rws 10L-28R and 10R-28L

AUTHORIZATION REQUIRED

NW-1, 16 JUN 2022 to 14 JUL 2022

NW-1, 16 JUN 2022 to 14 JUL 2022