

RNAV (RNP) Z RWY 28R

BOISE AIR TRML/GOWEN FLD (BOI)

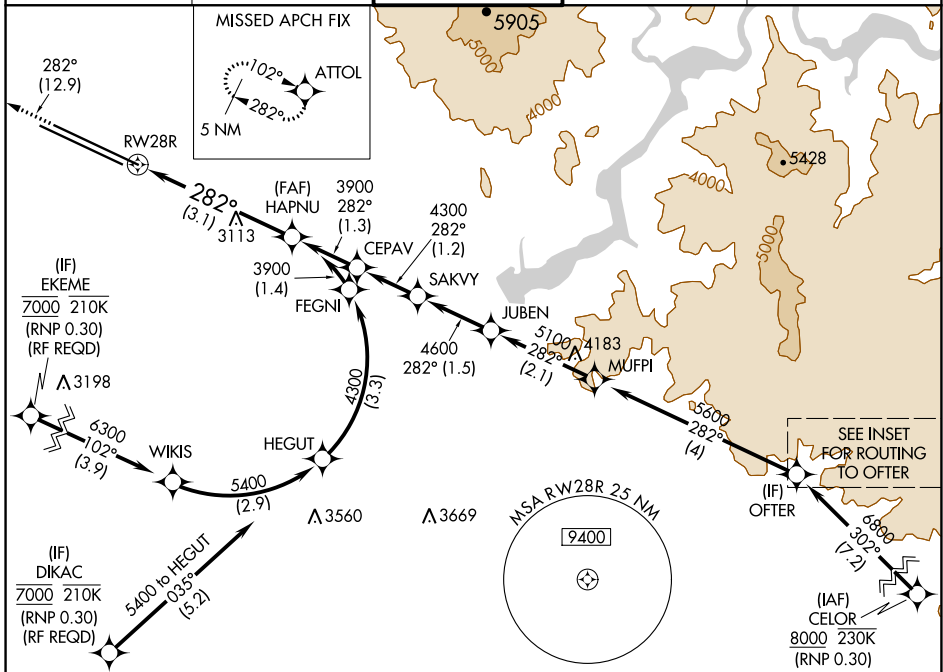
APP CRS	Rwy Idg	10000
282°	TDZE	2872
	Apt Elev	2872

RNP AR APCH.

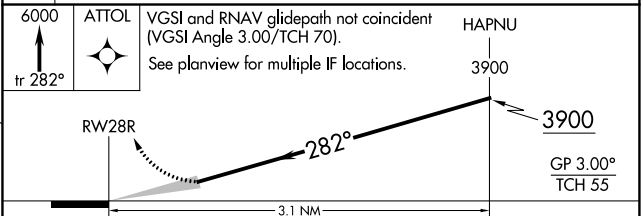
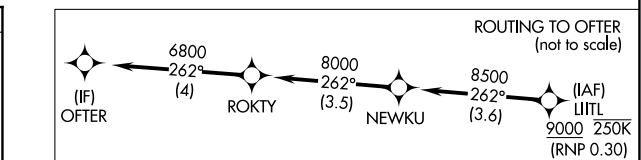
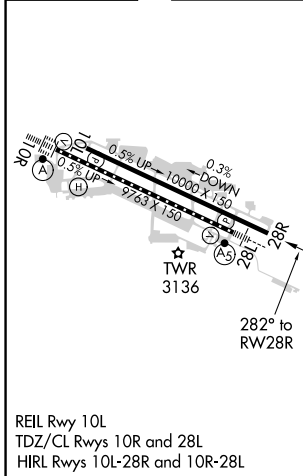
▼ For uncompensated Baro-VNAV systems, procedure NA below -15°C or above 54°C.

MISSED APPROACH: Climb to 6000 on track 282° to ATTOL and hold, continue climb-in-hold to 6000.

D-ATIS 123.9 290.4	BIG SKY APP CON 119.6 269.4	BOISE TOWER 118.1 257.8	GND CON 121.7 348.6	CLNC DEL 125.9 323.2
------------------------------	---------------------------------------	-----------------------------------	-------------------------------	--------------------------------



ELEV	2872	D	TDZE	2872
------	-------------	----------	------	-------------



CATEGORY	A	B	C	D
RNP 0.15 DA		3204-1	332 (400-1)	
RNP 0.30 DA		3303-1¼	431 (500-1¼)	

AUTHORIZATION REQUIRED

NW-1, 16 JUN 2022 to 14 JUL 2022

NW-1, 16 JUN 2022 to 14 JUL 2022