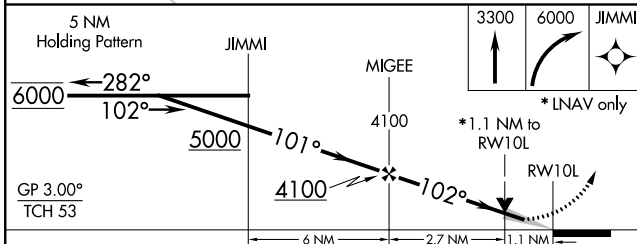
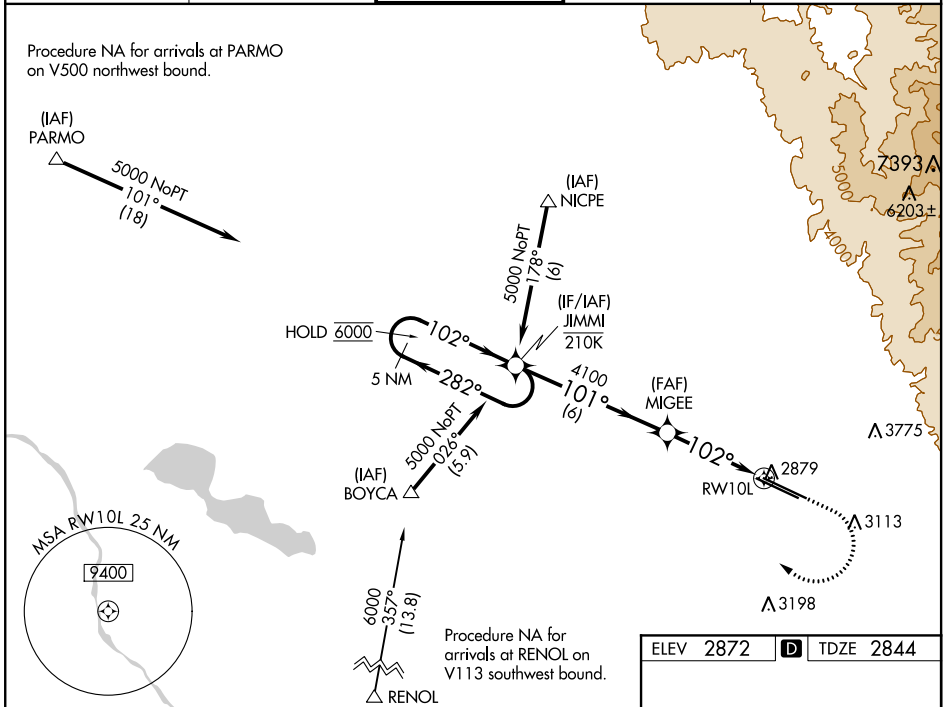


WAAS CH 78102 W10A	APP CRS 102°	Rwy Idg 10000 TDZE 2844 Apt Elev 2872
--	------------------------	--

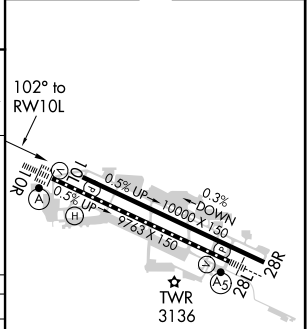
RNAV (GPS) Y RWY 10L

BOISE AIR TRML/GOWEN FLD (BOI)

RNP APCH.		MISSED APPROACH: Climb to 3300 then climbing right turn to 6000 direct JIMMI and hold, continue climb-in-hold to 6000.		
<p>▼ Circling NA north of Rwy 10L-28R. ▲ For uncompensated Baro-VNAV systems, LNAV/VNAV NA below -12°C or above 54°C.</p>				
D-ATIS 123.9 290.4	BIG SKY APP CON 119.6 269.4	BOISE TOWER 118.1 257.8	GND CON 121.7 348.6	CLNC DEL 125.9 323.2



ELEV 2872	D TDZE 2844
-----------	--------------------



CATEGORY	A	B	C	D
LPV DA	3094-7/8		250 (300-7/8)	
LNAV/VNAV DA	3135-1		291 (300-1)	
LNAV MDA	3240-1 396 (400-1)		3240-1 3/8 396 (400-1 1/8)	
C CIRCLING	3440-1 568 (600-1)		3740-2 1/2 868 (900-2 1/2) 3820-3 948 (1000-3)	

REIL Rwy 10L
TDZ/CL Rwys 10R and 28L
HIRL Rwys 10L-28R and 10R-28L

NW-1, 16 JUN 2022 to 14 JUL 2022

NW-1, 16 JUN 2022 to 14 JUL 2022