

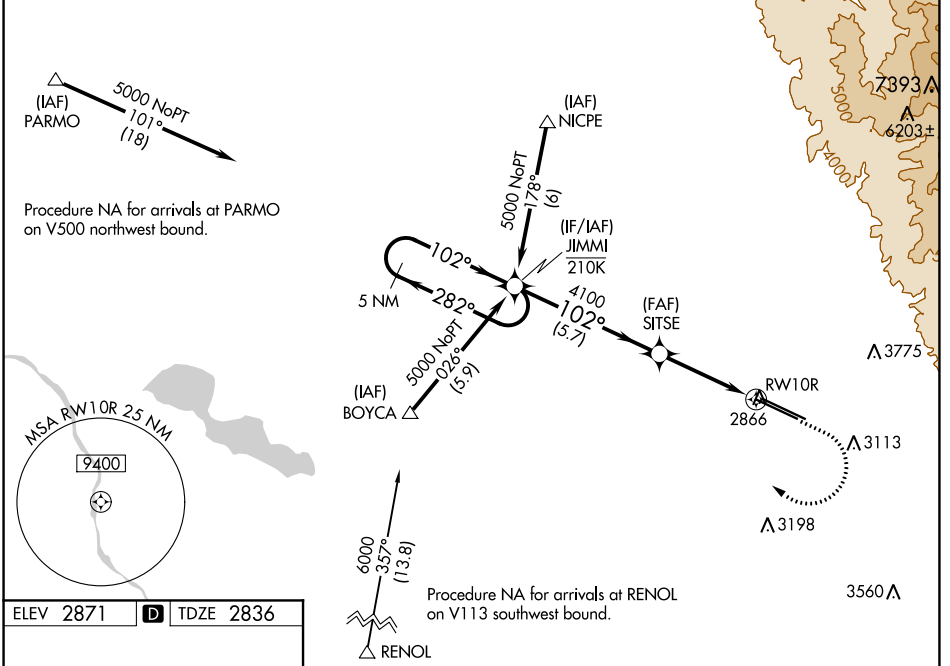
WAAS CH 40203 W10B	APP CRS 102°	Rwy Idg TDZE Apt Elev	9763 2836 2871
--	------------------------	-----------------------------	---

RNAV (GPS) Y RWY 10R

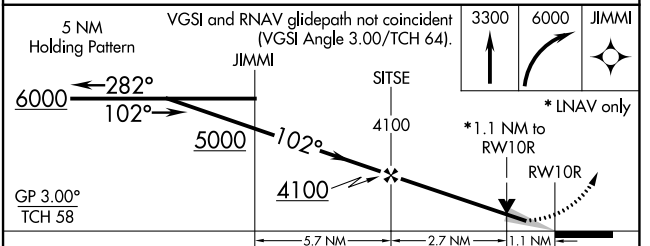
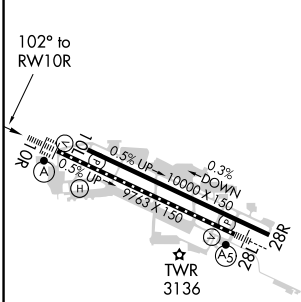
BOISE AIR TRML/GOWEN FLD (BOI)

<p>⚠ For uncompensated Baro-VNAV systems, LNAV/VNAV NA below -12°C (11°F) or above 54°C (130°F). DME/DME RNP-0.3 NA. Circling NA north of Rwy 10L-28R. For inop ALS, increase LPV Cat E visibility to RVR 4000, LNAV/VNAV all Cats and LNAV Cats C/D/E visibility to RVR 6000.</p>	<p>ALS-F-2</p>	<p>MISSED APPROACH: Climb to 3300 then climbing right turn to 6000 direct JIMMI and hold, continue climb-in-hold to 6000.</p>
	<p>A</p>	

D-ATIS 123.9 290.4	BIG SKY APP CON 119.6 269.4	BOISE TOWER 118.1 257.8	GND CON 121.7 348.6	CLNC DEL 125.9 323.2
------------------------------	---------------------------------------	--	-------------------------------	--------------------------------



ELEV 2871	D	TDZE 2836
-----------	----------	-----------



CATEGORY	A	B	C	D	E
LPV DA		3036/18	200 (200-½)		
LNAV/VNAV DA		3182/40	346 (400-¾)		
LNAV MDA	3240/24	404 (400-½)	3240/40	404 (400-¾)	
C CIRCLING	3440-1	569 (600-1)	3740-2½ 869 (900-2½)	3820-3 949 (1000-3)	3880-3 1009 (1100-3)

REL Rwy 10L
TDZ/CL Rwy 10R and 28L
HIRL Rwy 10L-28R and 10R-28L

NW-1, 16 JUN 2022 to 14 JUL 2022

NW-1, 16 JUN 2022 to 14 JUL 2022