


WAAS CH 77702 W28A	APP CRS 282°	Rwy Idg TDZE Apt Elev	9763 2858 2871
--	------------------------	-----------------------------	---

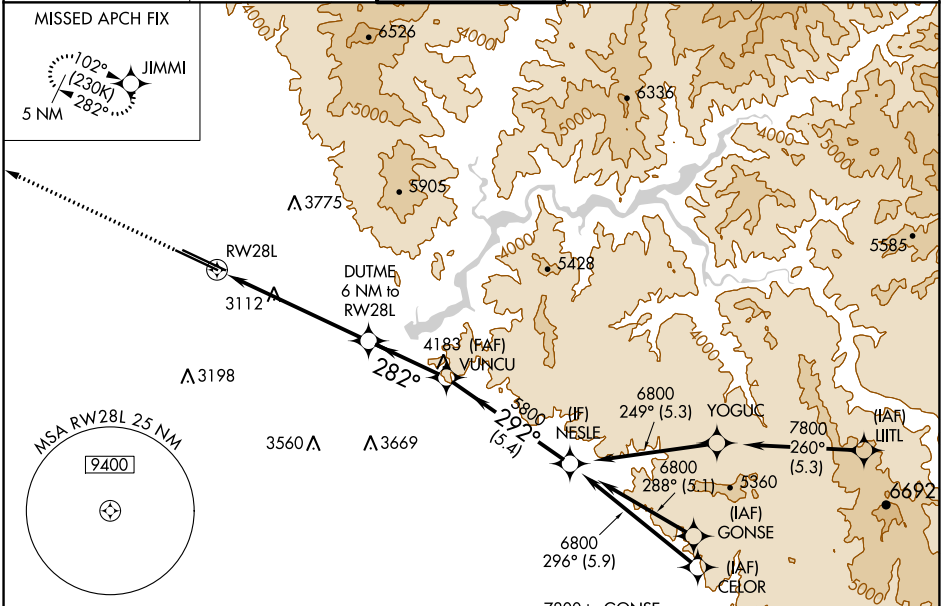
RNAV (GPS) Y RWY 28L

BOISE AIR TRML/GOWEN FLD (BOI)

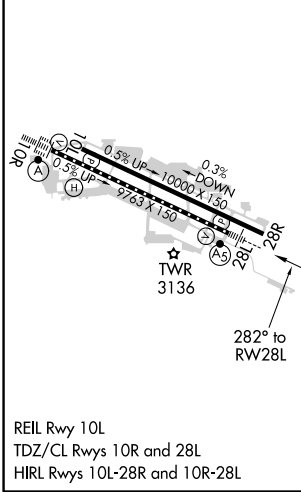
⚠ For uncompensated Baro-VNAV systems, LNAV/VNAV NA below -12°C (11°F) or above 52°C (126°F). Circling NA north of Rwy 10L-28R. DME/DME RNP-0.3 NA. For inop ALS, increase LPV all Cats visibility to RVR 5000, LNAV/VNAV Cat E visibility to 1 3/8 SM, and LNAV Cat C/D/E visibility to 1 3/4 SM.

MALSR

MISSED APPROACH: Climb to 6000 direct JIMMI and hold, continue climb-in-hold to 6000.

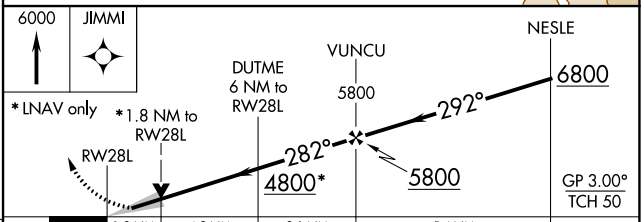
D-ATIS 123.9 290.4	BIG SKY APP CON 119.6 269.4	BOISE TOWER 118.1 257.8	GND CON 121.7 348.6	CLNC DEL 125.9 323.2
------------------------------	---------------------------------------	--	-------------------------------	--------------------------------



ELEV 2871	D	TDZE 2858
-----------	----------	-----------



Procedure NA for arrivals at CANEK on V4-253-330 southeast bound.



CATEGORY	A	B	C	D	E
LPV DA		3183/30	325 (400-3/8)		
LNAV/VNAV DA		3274/45	416 (500-7/8)		
LNAV MDA	3480/24	622 (700-1/2)	3480-1 3/8	622 (700-1 3/8)	
C CIRCLING	3480-1	609 (700-1)	3740-2 1/2 869 (900-2 1/2)	3820-3 949 (1000-3)	3880-3 1009 (1100-3)

NW-1, 16 JUN 2022 to 14 JUL 2022

NW-1, 16 JUN 2022 to 14 JUL 2022