

WAAS CH <b>65803</b> <b>W28B</b>	APP CRS <b>282°</b>	Rwy Idg <b>10000</b> TDZE <b>2871</b> Apt Elev <b>2871</b>
--	------------------------	---

# RNAV (GPS) Y RWY 28R

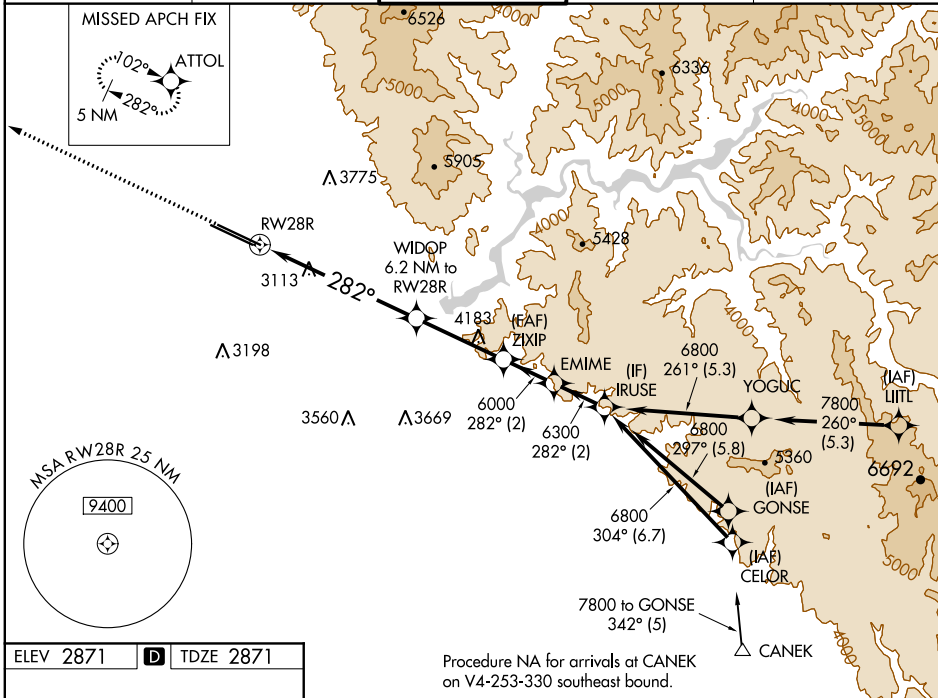
BOISE AIR TRML/GOWEN FLD (BOI)



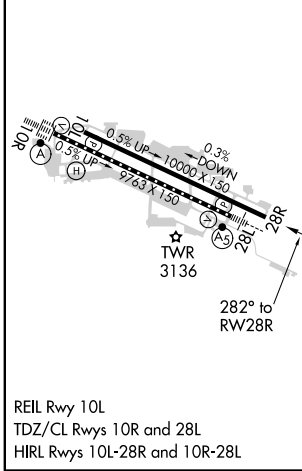
For uncompensated Baro-VNAV systems, LNAV/VNAV NA below -12°C (11°F) or above 52°C (126°F).  
Circling NA north of Rwy 10L-28R. DME/DME RNP-0.3 NA.

MISSED APPROACH: Climb to 6000 direct ATTOL and hold, continue climb-in-hold to 6000.

D-ATIS <b>123.9 290.4</b>	BIG SKY APP CON <b>119.6 269.4</b>	<b>BOISE TOWER</b> <b>118.1 257.8</b>	GND CON <b>121.7 348.6</b>	CLNC DEL <b>125.9 323.2</b>
------------------------------	---------------------------------------	--	-------------------------------	--------------------------------



ELEV 2871	<b>D</b>	TDZE 2871
-----------	----------	-----------



6000	ATTOL	VGSi and RNAV glidepath not coincident (VGSi Angle 3.00/TCH 70).			
*LNAV only	WIDOP 6.2 NM to RW28R	ZIXIP 6000	EMIME 6300	IRUSE 6800	GP 3.00° TCH 55
	*2.3 NM to RW28R				
	2.3 NM	3.9 NM	3.5 NM	2 NM	2 NM
CATEGORY	A	B	C	D	
LPV DA		3121-3/4	250 (300-3/4)		
LNAV/VNAV DA		3199-1	328 (400-1)		
LNAV MDA	3660-1 1/4	789 (800-1 1/4)	3660-2 1/2	789 (800-2 1/2)	
<b>C</b> CIRCLING	3660-1 1/4	789 (800-1 1/4)	3740-2 1/2 869 (900-2 1/2)	3820-3 949 (1000-3)	