

VORTAC BOI 113.3 Chan 80	APP CRS 101°	Rwy Idg TDZE Apt Elev	10000 2844 2872
--	------------------------	-----------------------------	--

VOR or TACAN RWY 10L

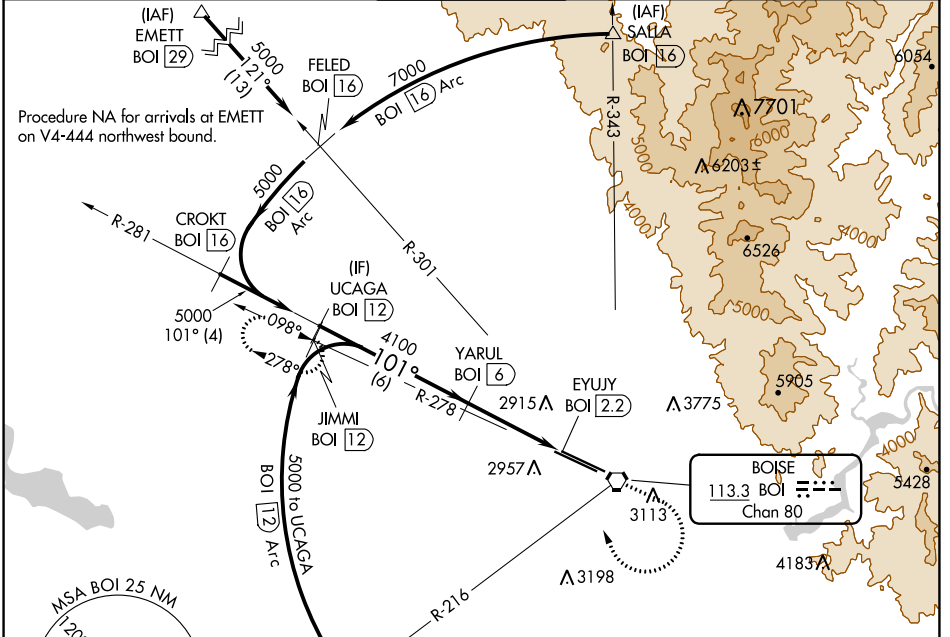
BOISE AIR TRML/GOWEN FLD (BOI)

DME required.

⚠ Circling NA north of Rwy 10L-28R.

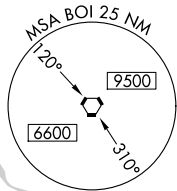
MISSED APPROACH: Climb to 3700 then climbing right turn to 5000 on heading 320° and BOI VORTAC R-278 to JIMMI/12 DME and hold.

D-ATIS 123.9 290.4	BIG SKY APP CON 119.6 269.4	BOISE TOWER 118.1 257.8	GND CON 121.7 348.6	CLNC DEL 125.9 323.2
------------------------------	---------------------------------------	--	-------------------------------	--------------------------------

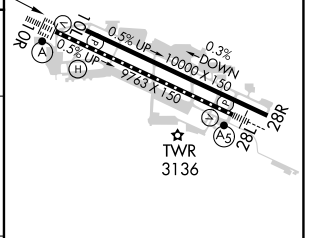
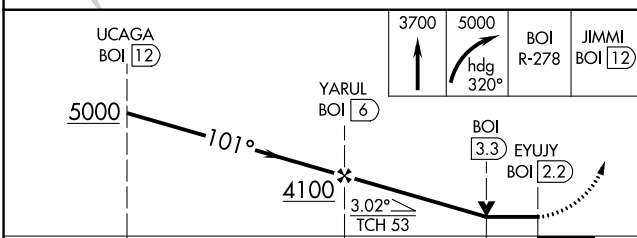


NW-1, 16 JUN 2022 to 14 JUL 2022

NW-1, 16 JUN 2022 to 14 JUL 2022



ELEV 2872	TDZE 2844
-----------	-----------



CATEGORY	A	B	C	D	E
S-10L	3240-1	396 (400-1)	3240-1½	396 (400-1½)	
CIRCLING	3440-1	568 (600-1)	3740-2½ 868 (900-2½)	3820-3 948 (1000-3)	3880-3 1008 (1100-3)

REIL Rwy 10L
TDZ/CL Rwys 10R and 28L
HIRL Rwys 10L-28R and 10R-28L