

BOISE, IDAHO

AL-57 (FAA)

21336

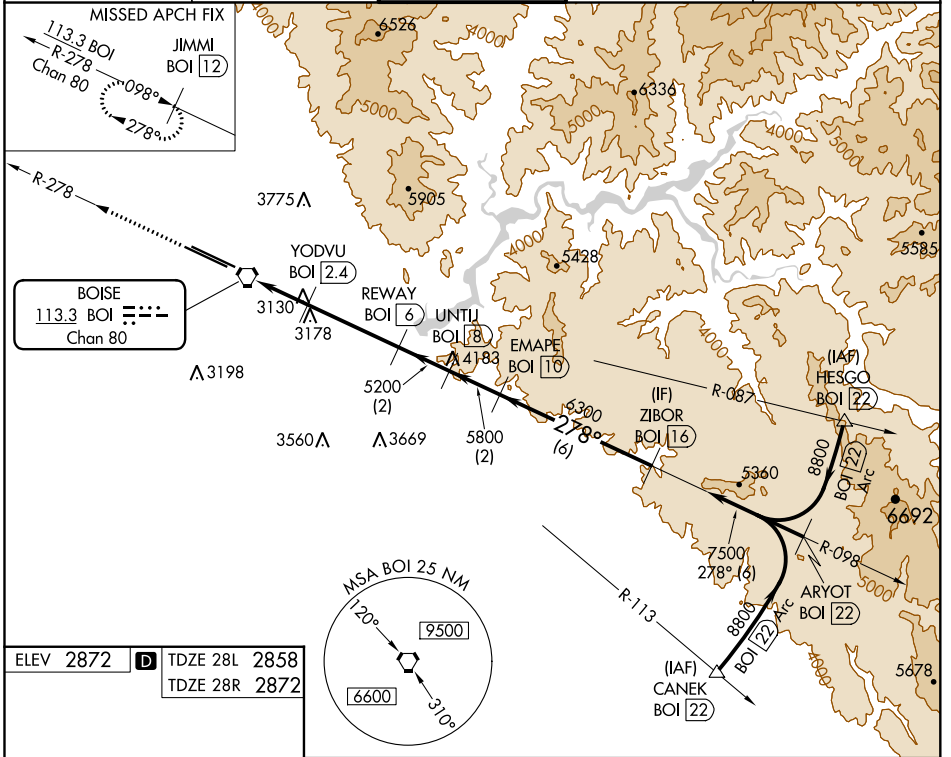
VORTAC BOI 113.3 Chan 80	APP CRS 278°	Rwy Idg 281	28R 10000
		TDZE 2858	2872
		Apt Elev 2872	2872

VOR or TACAN RWY 28L

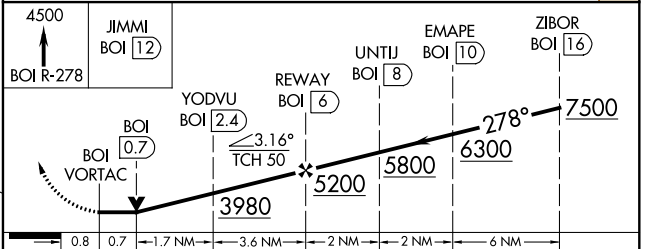
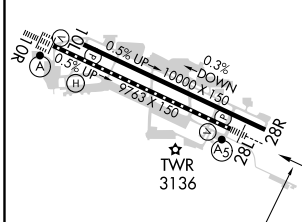
BOISE AIR TRML/GOWEN FLD (BOI)

DME required. ⚠ Circling NA north of Rwy 10L-28R. For inop ALS increase S-28L Cat E visibility to 1½ SM.	MALSR Rwy 28L 	MISSED APPROACH: Climb to 4500 on BOI VORTAC R-278 to JIMMI/12 DME and hold.
---	----------------------	--

D-ATIS 123.9 290.4	BIG SKY APP CON 119.6 269.4	BOISE TOWER 118.1 257.8	GND CON 121.7 348.6	CLNC DEL 125.9 323.2
------------------------------	---------------------------------------	-----------------------------------	-------------------------------	--------------------------------



ELEV 2872 **D** TDZE 28L 2858
TDZE 28R 2872



CATEGORY	A	B	C	D	E
S-28L	3380/24	522 (600-½)	3380/55	522 (600-1)	
SIDESTEP RWY 28R	3380-1⅜	508 (600-1⅜)	3380-1⅞	3380-2½ 508 (600-2½)	
C CIRCLING	3440-1	568 (600-1)	3740-2½	3820-3	3880-3
			868 (900-2½)	948 (1000-3)	1008 (1100-3)

BOISE, IDAHO
Amdt 2A 22APR21

43°34'N-116°13'W

VOR or TACAN RWY 28L

NW-1, 16 JUN 2022 to 14 JUL 2022

NW-1, 16 JUN 2022 to 14 JUL 2022