

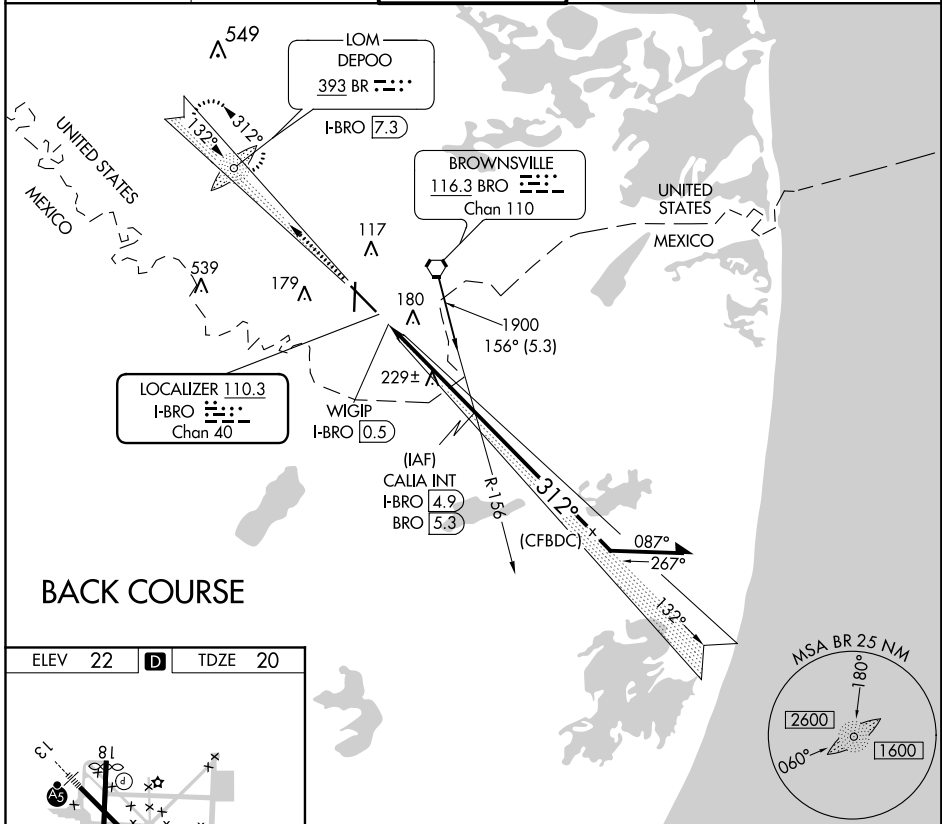
LOC/DME I-BRO <b>110.3</b> Chan <b>40</b>	APP CRS <b>312°</b>	Rwy Idg <b>7399</b> TDZE <b>20</b> Apt Elev <b>22</b>
---	------------------------	---

**LOC BC RWY 31**  
BROWNSVILLE/SOUTH PADRE ISLAND INTL (BRO)

**⚠** Helicopter visibility reduction below ¼ SM NA. When local altimeter setting not received, use Port Isabel altimeter setting and increase all MDA 40 ft; increase Circling Cat D visibility ¼ mile. Circling to Rwy 18 NA at night. ADF or DME required. VDP NA when using Port Isabel altimeter setting.

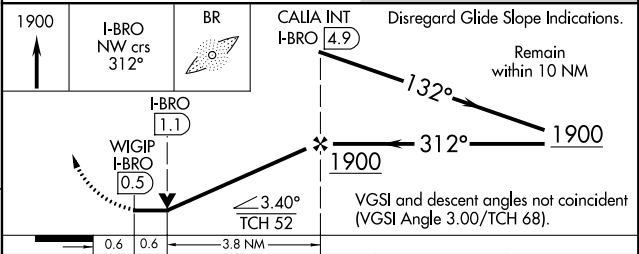
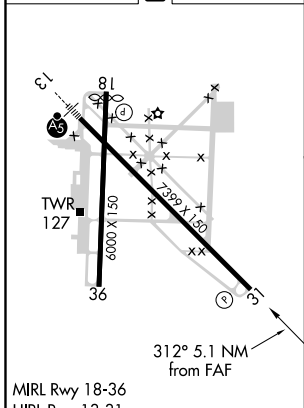
**⚠** MISSED APPROACH: Climb to 1900 on I-BRO localizer NW course (312°) to DEPOO LOM/ I-BRO 7.3 DME and hold.

ATIS <b>128.55</b>	VALLEY APP CON <b>119.5 257.6</b>	<b>BROWNSVILLE TOWER</b> ★ <b>118.9</b> (CTAF) <b>0 239.3</b>	GND CON <b>121.9</b>	UNICOM <b>122.95</b>
-----------------------	--------------------------------------	--	-------------------------	-------------------------



**BACK COURSE**

ELEV <b>22</b>	<b>D</b>	TDZE <b>20</b>
----------------	----------	----------------



FAF to MAP 4.4 NM		CATEGORY		A	B	C	D
Knots	60 90 120 150 180	S-31		480-1	460 (500-1)	480-1⅓	460 (500-1⅓)
Min:Sec	4:24 2:56 2:12 1:46 1:28	<input checked="" type="checkbox"/> CIRCLING		480-1	540-1	540-1½	680-2
				458 (500-1)	518 (600-1)	518 (600-1½)	658 (700-2)

SC-3, 16 JUN 2022 to 14 JUL 2022

SC-3, 16 JUN 2022 to 14 JUL 2022