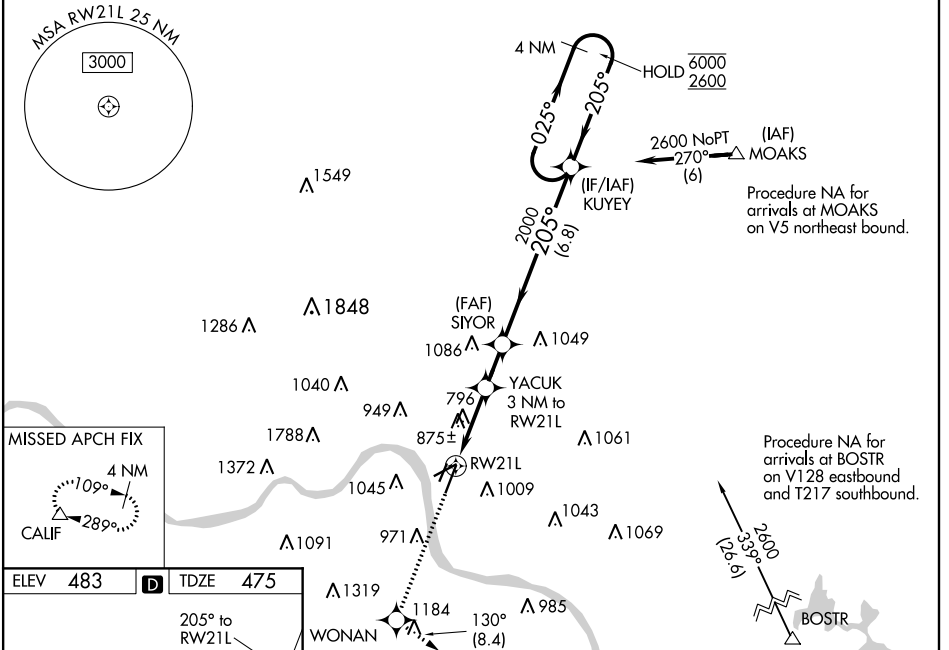


WAAS CH <b>42511</b> W21A	APP CRS <b>205°</b>	Rwy Idg TDZE Apt Elev	<b>6101</b> <b>475</b> <b>483</b>
---------------------------------	------------------------	-----------------------------	---

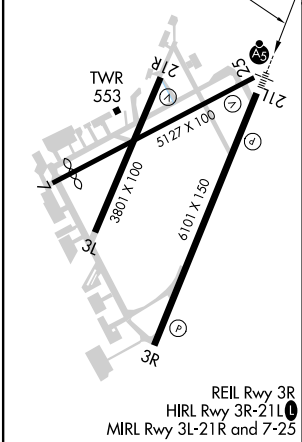
# RNAV (GPS) RWY 21L

CINCINNATI MUNI/LUNKEN FLD (LUK)

RNP APCH.				MALSR		MISSED APPROACH: Climb to 2500 direct WONAN and on track 130° to CALIF and hold, continue climb-in-hold to 2600.	
▼ Circling NA for Cat D north of Rwy 7 and northwest of Rwy 21R. Circling Rwy 3L, 7, 21R ▲ NA at night. Rwy 21L helicopter visibility reduction below 3/4 SM NA. Inop table does not apply to LNAV/VNAV. For uncompensated Baro-VNAV systems, LNAV/VNAV NA below -15°C or above 54°C. For inop ALS, increase LPV all Cats visibility to RVR 4500, LNAV Cats A/B visibility to RVR 5500 and LNAV Cats C/D visibility to 2 SM.				(IF/IAF) KUYEY			
ATIS <b>120.25</b>	CINCINNATI APP CON <b>121.0 254.25</b>	LUNKEN TOWER ★ <b>118.7</b> (CTAF) <b>257.8</b>	GND CON <b>121.9</b>	CLNC DEL <b>121.9</b>	CLNC DEL <b>124.9</b> (when twr closed)	UNICOM <b>122.95</b>	



ELEV 483	D	TDZE 475
----------	---	----------



2500 WONAN	↑	ir 130°	CALIF	△	4 NM Holding Pattern
*LNAV only.					
*2.1 NM to RW21L		YACUK 3 NM to RW21L		SIYOR 2000	
RW21L		*1460		2000	
2.1 NM		0.9 NM		1.7 NM	
A		B		C	
LPV DA		756/40		281 (300-3/4)	
LNAV/VNAV DA		1217-2 1/4		742 (800-2 1/4)	
LNAV MDA		1200/40		725 (800-3/4)	
CIRCLING		1300-1 1/4		1360-2 3/4	
		817 (900-1 1/4)		877 (900-2 1/2)	
		1360-1 1/4		1360-2 1/2	
		877 (900-1 1/4)		877 (900-2 3/4)	
GP 3.00° TCH 39					

EC-2, 16 JUN 2022 to 14 JUL 2022

EC-2, 16 JUN 2022 to 14 JUL 2022