

ROCKT ONE DEPARTURE (RNAV)

AL-83 (FAA)

CINCINNATI, OHIO

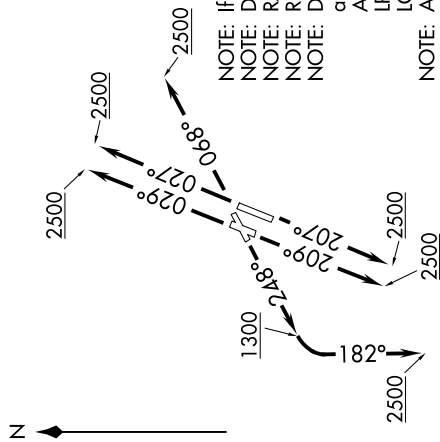
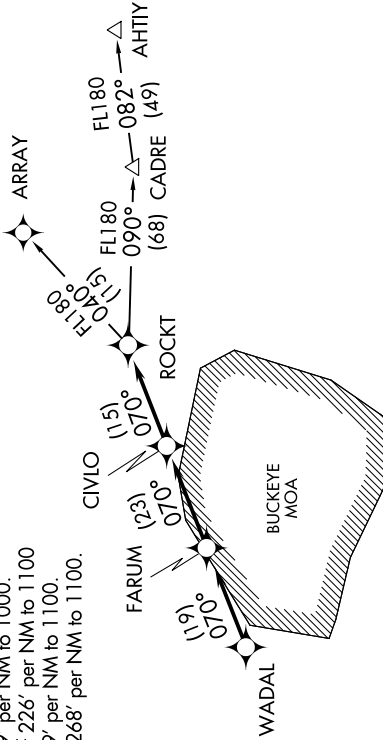
EC-2, 16 JUN 2022 to 14 JUL 2022

TAKEOFF MINIMUMS

- Rwy 3L: 400-2 with minimum climb of 226' per NM to 1300 or standard with minimum climb of 423' per NM to 1000.
- Rwy 3R: 400-2 with minimum climb of 233' per NM to 1300 or standard with minimum climb of 384' per NM to 1100.
- Rwy 7: 400-1 3/4 with minimum climb of 279' per NM to 1000 or standard with minimum climb of 451' per NM to 1000.
- Rwy 21L: 500-2 1/2 with minimum climb of 254' per NM to 1100 or standard with minimum climb of 439' per NM to 1000.
- Rwy 21R: 500-2 3/4 with minimum climb of 226' per NM to 1100 or standard with minimum climb of 489' per NM to 1100.
- Rwy 25: 600-2 1/2 with minimum climb of 268' per NM to 1100.

- ATIS 120.25
- LUNKEN TOWER ★ 118.7 (CTAF) 257.8
- GND CON 121.9
- CLNC DEL 121.9
- CLNC DEL 124.9 (When twr closed)
- CINCINNATI DEP CON 121.0 254.25

TOP ALTITUDE: ASSIGNED BY ATC.



NOTE: If unable to accept climb rates, advise ATC on initial contact.  
 NOTE: DME/DME/IRU or GPS required.  
 NOTE: RADAR required.  
 NOTE: RNAV 1.

NOTE: Departure procedure limited to aircraft with the following destination airports and departure times as indicated:  
 Anytime - ABE, AGC, ALB, AVP, BDL, BKL, BOS, BWI, CAK, CGF, CLE, LNN, LPR, MDT, MHT, PHL, PIT, PNE, PVD, PWM, SWF, TTN, UNV, and overseas flights.  
 LGA between 1000-1800 UTC.

NOTE: ARRAY TRANSITION (ROCKT1.ARRAY) limited to aircraft landing: BKL, CAK, CLE, CGF, LNN, LPR.  
 NOTE: Accelerate to 250K, if unable advise ATC.

NOTE: Chart not to scale.

(NARRATIVE ON FOLLOWING PAGE)

ROCKT ONE DEPARTURE (RNAV)

(ROCKT1.ROCKT) 15AUG19

CINCINNATI, OHIO

CINCINNATI MUNI/LUNKEN FLD (L.U.K)

EC-2, 16 JUN 2022 to 14 JUL 2022