

WAAS CH 61310 W27A	APP CRS 269°	Rwy Idg TDZE Apt Elev	6502 139 147
--	------------------------	-----------------------------	---

RNAV (GPS) RWY 27

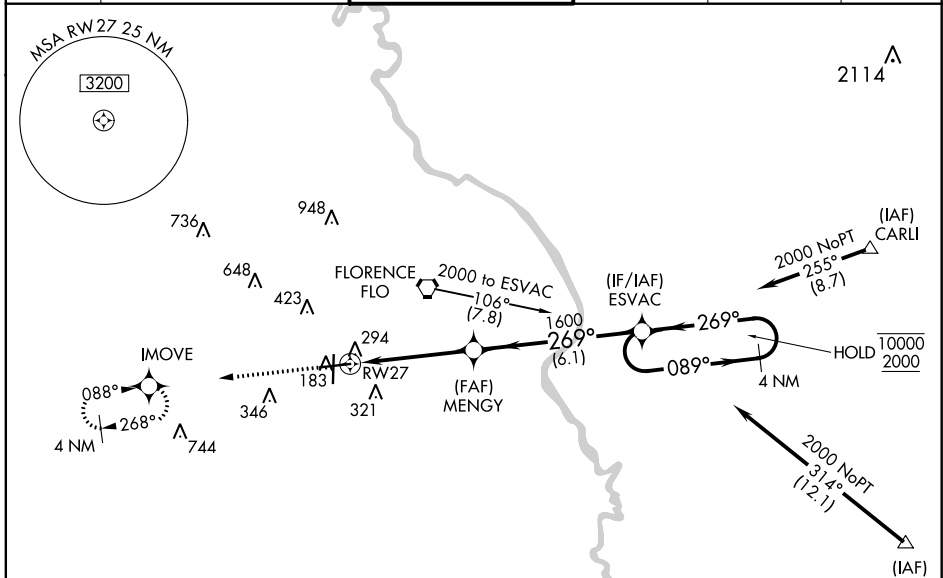
FLORENCE RGNL (FLO)

RNP APCH.

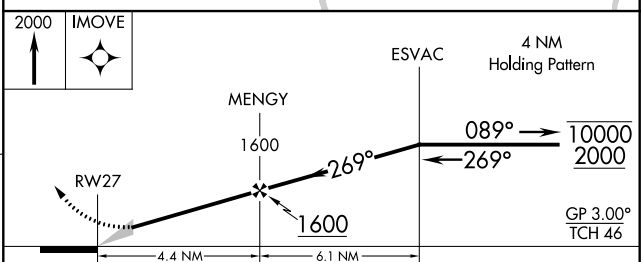
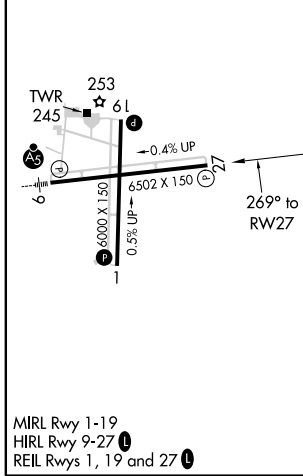
▼ Circling Rwy 1, 19 NA at night. Baro-VNAV NA when using Darlington altimeter setting.
 For uncompensated Baro-VNAV systems, LNAV/VNAV NA below 15°C or above 48°C.
 ▲ When local altimeter setting not received, use Darlington altimeter setting: increase LPV DA to 534 feet and visibility all Cats ¼ SM; increase LNAV/VNAV DA to 655 feet and visibility all Cats ¼ SM; increase all MDA 60 feet and visibility LNAV Cat D and Circling Cat C and D ¼ SM.

MISSED APPROACH:
 Climb to 2000 direct
 IMOVE and hold.

ATIS 123.625	FLORENCE APP CON* 118.6 341.7 (256°-074°) 135.25 316.15 (075°-255°)	FLORENCE TOWER* 125.1 (CTAF) 353.85	GND CON 121.9 353.85	CLNC DEL 121.9 353.85	UNICOM 122.95
------------------------	---	--	--------------------------------	---------------------------------	-------------------------



ELEV 147	TDZE 139
-----------------	-----------------



CATEGORY	A	B	C	D
LPV DA		474-1¼	335 (400-1¼)	
LNAV/VNAV DA		595-1¾	456 (500-1¾)	
LNAV MDA	560-1	421 (500-1)	560-1¼	421 (500-1¼)
CIRCLING	640-1 493 (500-1)	660-1 513 (600-1)	900-2¼ 753 (800-2¼)	900-2½ 753 (800-2½)

SE-2, 16 JUN 2022 to 14 JUL 2022

SE-2, 16 JUN 2022 to 14 JUL 2022