

WAAS CH 70710 W09A	APP CRS 088°	Rwy Idg TDZE Apt Elev	6502 147 147
--	------------------------	-----------------------------	---

RNAV (GPS) RWY 9

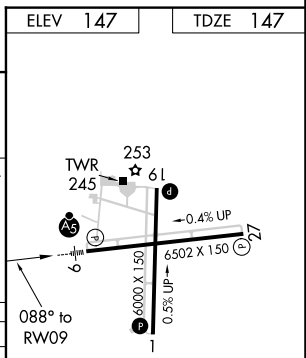
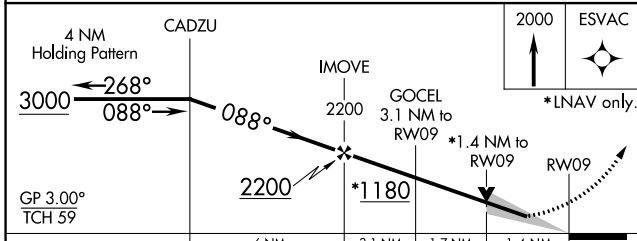
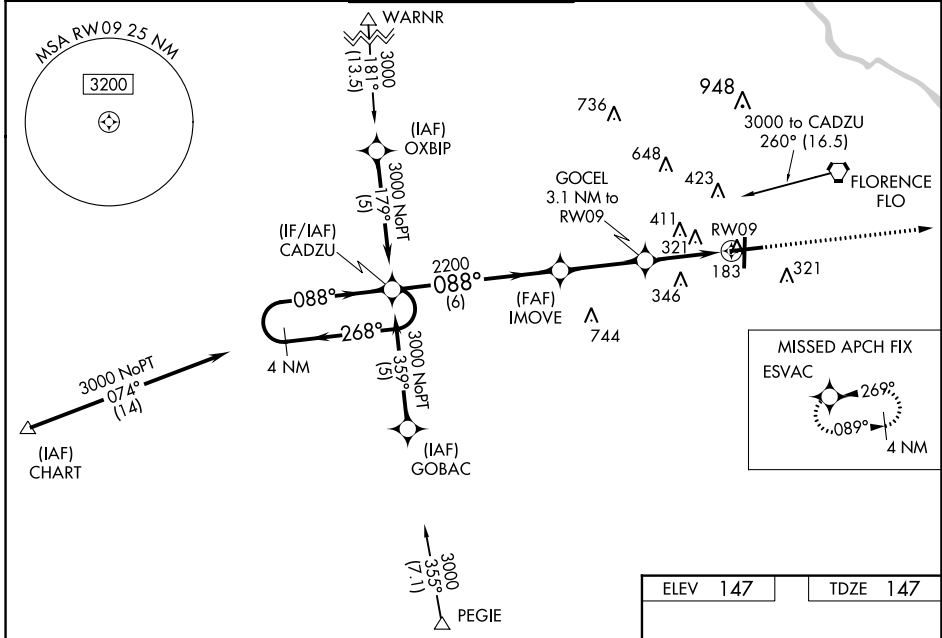
FLORENCE RGNL (FLO)

▼ Night landing: Rwy 1, 19 NA. For uncompensated Baro-VNAV systems, LNAV/VNAV NA below -15°C (5°F) or above 49°C (120°F). DME/DME RNP-0.3 NA. When local altimeter setting not received, use Darlington altimeter setting: increase LPV DA to 489 feet and visibility all Cats ½ SM; increase LNAV/VNAV DA to 695 feet; increase all MDA 60 feet and visibility LNAV Cat C and Circling Cat C and D ¼ SM. For inop MALSR when using Darlington altimeter setting, increase LPV all Cats visibility to 1¼ mile. Baro-VNAV and VDP NA when using Darlington altimeter setting.

MALSR

MISSED APPROACH:
Climb to 2000 direct
ESVAC and hold.

ATIS 123.625	FLORENCE APP CON* 118.6 341.7 135.25 316.15	(256°-074°) (075°-255°)	FLORENCE TOWER* 125.1 (CTAF) 0 353.85	GND CON 121.9 353.85	CLNC DEL 121.9 353.85	UNICOM 122.95
------------------------	---	----------------------------	---	--------------------------------	---------------------------------	-------------------------



CATEGORY	A	B	C	D
LPV DA	441-½ 294 (300-½)			
LNAV/VNAV DA	623-1¼ 476 (500-1¼)			
LNAV MDA	660-½ 513 (600-½)	660-1 513 (600-1)	660-1¼ 513 (600-1¼)	
CIRCLING	660-1 513 (600-1)	900-2¼ 753 (800-2¼)	900-2½ 753 (800-2½)	

REIL Rwy 1, 19 and 27
HIRL Rwy 9-27

SE-2, 16 JUN 2022 to 14 JUL 2022

SE-2, 16 JUN 2022 to 14 JUL 2022