

FORT BRAGG, NORTH CAROLINA

RNAV (GPS) RWY 23

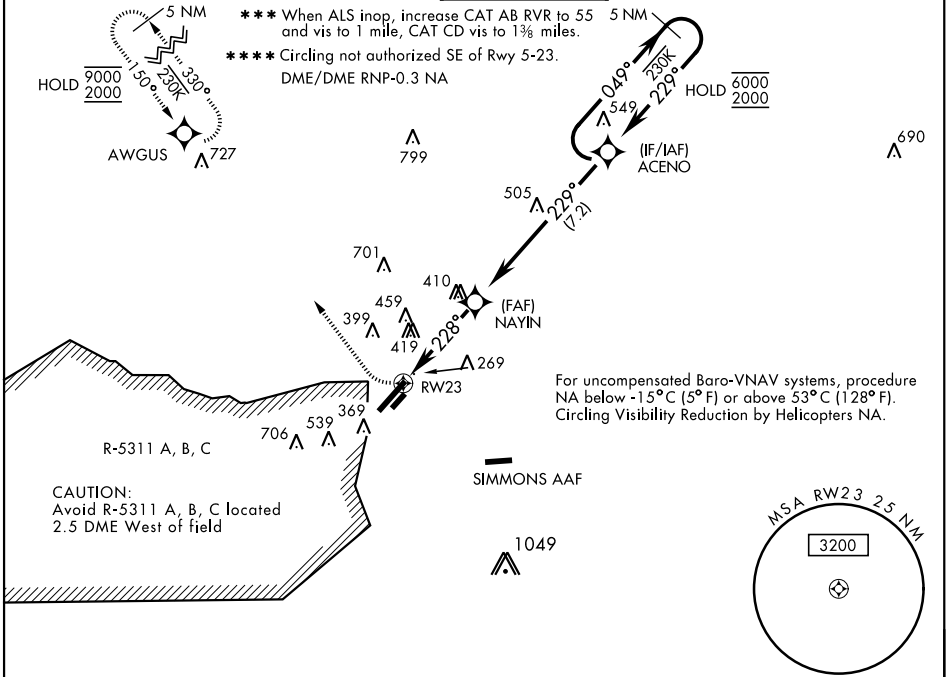
WAAS Chan 52202 W23A	APCH CRS 228°	Rwy ldg TDZE Arprt Elev 7501 200 218
--	-------------------------	--

AL-147 [USAF]

POPE AAF (KPOB)

RADAR required.	ALSF-1 	MISSED APPROACH: Climbing right turn to 2000 direct AWGUS and hold.
<p>▼ * When ALS inop, increase CAT ABCD RVR to 40 vis to 3/4 mile. ** When ALS inop, increase CAT ABCD vis to 1 1/4 mile.</p>		

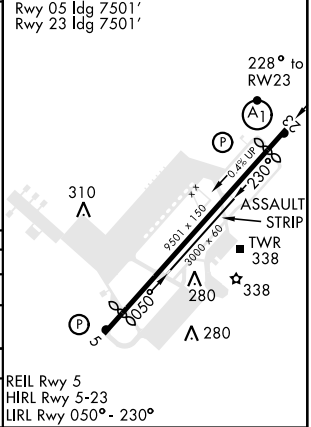
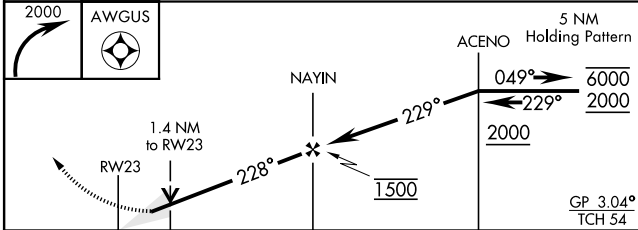
ATIS 132.3 353.725	FAYETTEVILLE APP CON 125.175 285.575 133.0 290.25 (271° - 090°) (091° - 270°)	TOWER 135.025 291.1	GND CON 124.55 275.8	CLNC DEL 124.55 275.8
------------------------------	---	-------------------------------	--------------------------------	---------------------------------



SE-2, 16 JUN 2022 to 14 JUL 2022

SE-2, 16 JUN 2022 to 14 JUL 2022

EMERG SAFE ALT 100 NM 5300	ELEV 218	TDZE 200
----------------------------	----------	----------



CATEGORY	A	B	C	D
LPV *		400/24	200 (200-1/2)	
LNAV/ **		572/40	372 (400-3/4)	
VNAV DA ***	680/24	480 (500-1/2)	680/50	480 (500-1)
**** CIRCLING	760-1	542 (600-1)	920-2 702 (800-2)	1060-2 3/4 842 (900-2 3/4)

FORT BRAGG, NORTH CAROLINA 35°10'N-79°01'W POPE AAF (KPOB)

Amdt 7 24MAY18

RNAV (GPS) RWY 23