

# DALLAS ONE DEPARTURE

AL-160 (FAA)

FORT WORTH, TEXAS

SC-2, 16 JUN 2022 to 14 JUL 2022

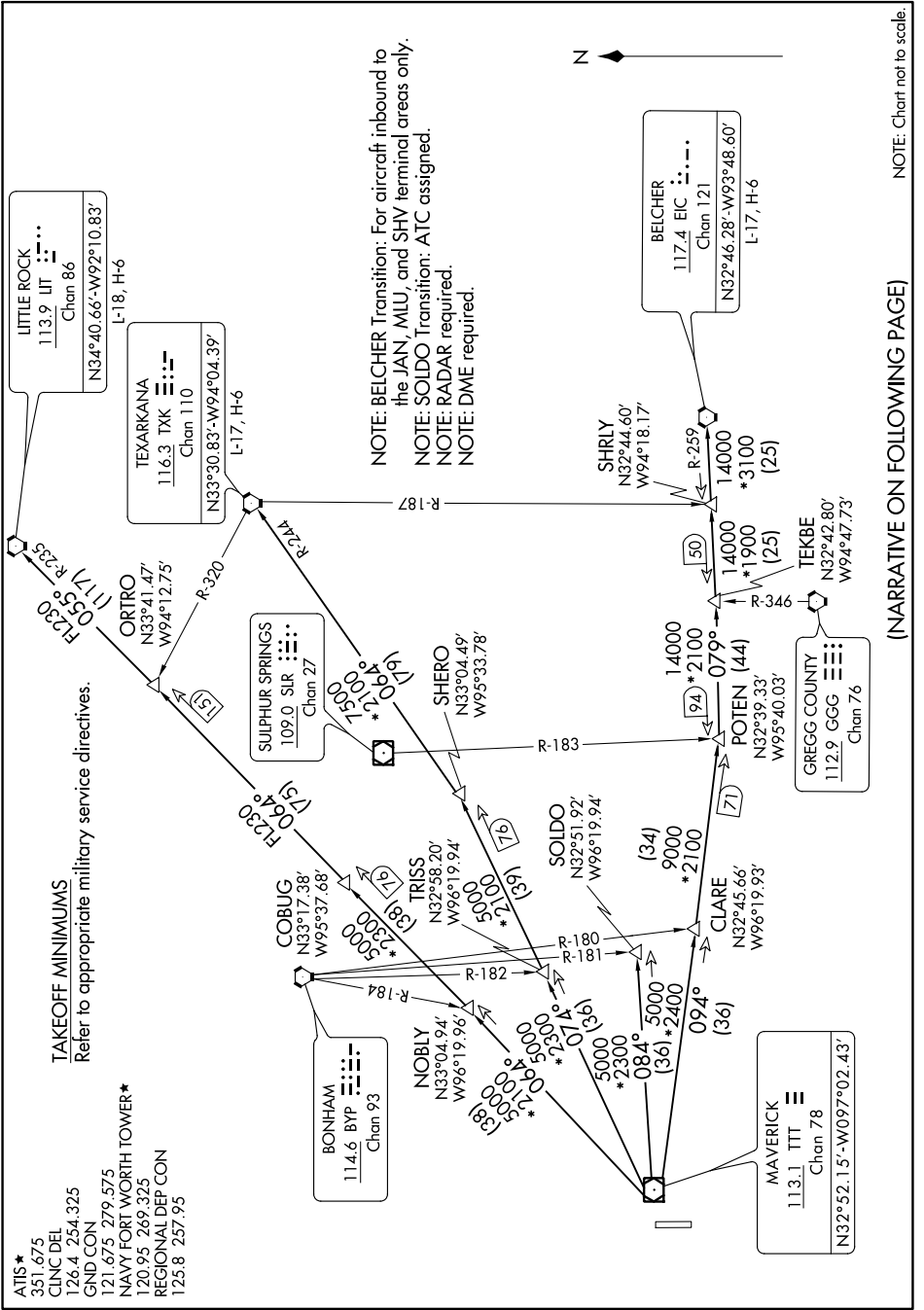
- ATIS\*
- 351.675
- CLNC DEL
- 126.4 254.325
- GND CON
- 121.675 279.575
- NAVY FORT WORTH TOWER\*
- 120.95 269.325
- REGIONAL DEP CON
- 125.8 257.95

## TAKEOFF MINIMUMS

Refer to appropriate military service directives.

### NAVY FORT WORTH TOWER\*

- 120.95 269.325
- REGIONAL DEP CON
- 125.8 257.95



NOTE: BELCHER Transition: For aircraft inbound to the JAN, MLU, and SHV terminal areas only.  
 NOTE: SOLDO Transition: ATC assigned.  
 NOTE: RADAR required.  
 NOTE: DME required.

(NARRATIVE ON FOLLOWING PAGE)

NOTE: Chart not to scale

SC-2, 16 JUN 2022 to 14 JUL 2022

# DALLAS ONE DEPARTURE

FORT WORTH, TEXAS